

NOV 25 - DEC 23



BALTIMORE CENTER STAGE PRESENTS
ARTSCENTRIC'S PRODUCTION OF
RODGERS & HAMMERSTEIN'S

Cinderella

(ENCHANTED EDITION)

MUSIC BY
**RICHARD
RODGERS**

BOOK AND LYRICS BY
**OSCAR
HAMMERSTEIN II**

ADAPTED FOR THE STAGE BY
**TOM
BRIGGS**

FROM THE TELEPLAY BY
**ROBERT L.
FREEDMAN**

DIRECTED BY
**KEVIN S.
MCALLISTER**

MUSIC DIRECTED BY
**CEDRIC D.
LYLES**

CHOREOGRAPHED BY
**SHALYCE
HEMBY**

BALTIMORE CENTER STAGE

ArtsCentric

LAND ACKNOWLEDGMENT

Honor Native Land

Responding to a call from our Indigenous colleagues, collaborators, and neighbors, Baltimore Center Stage is working toward building meaningful and accountable relationships with the land we occupy. As a first step on this path, you'll see a land acknowledgement in each of our programs. Acknowledgement is itself a small gesture, and we look forward to continuing our efforts toward decolonization in a meaningful way. If you're interested in more feel free to visit the US Department of Arts and Culture's "Honor Native Land" guide.

Baltimore Center Stage acknowledges that the land beneath us, this place, this community, owes its vitality to generations who have come before. Some were brought forcibly to this land, some came here in search of ownership or simply a better life, and some have lived and stewarded this land for countless generations. In a spirit of making erased histories visible, we acknowledge that we are standing on the ancestral and occupied lands of the Piscataway peoples. The Susquehannock, Lenape, and Lumbee peoples have also cared for this land. These peoples are not relics of the past. They continue to steward this land today with care, vitality, and tradition. Their relations are numerous throughout Turtle Island, and they continue to grow. We pay respects to their elders: past, present, and future. Please take a moment to consider the many legacies of violence, displacement, migration, and settlement that bring us together here today. And please join us in uncovering such truths at any and all public events.

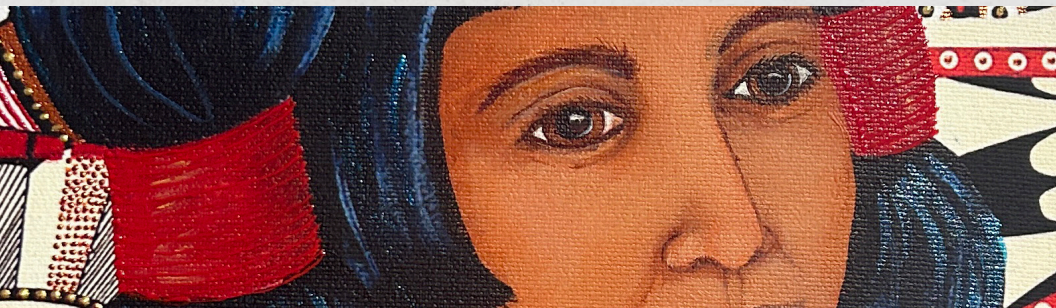
Additionally, in the spirit of reconciliation, you can honor the Indigenous peoples of this land by donating to Native American Lifelines, donating to or visiting the Baltimore American Indian Center & Heritage Museum, and supporting local Indigenous artists. These are only a few suggestions of the many ways we can move towards reconciliation.



BALTIMORE AMERICAN
INDIAN CENTER

THE INDIGENOUS ART GALLERY

Free to the public,
open during regular
BCS box office hours,
Tue - Fri 12PM to 6PM



CONTENTS

This program is published by:

BALTIMORE CENTER STAGE

700 North Calvert Street
Baltimore, MD 21202

BOX OFFICE
410.332.0033

ADMINISTRATION
410.986.4000

CENTERSTAGE.ORG
INFO@CENTERSTAGE.ORG

Season Artwork by
Brandon J. Wallace

- 2 WELCOME FROM BCS
- 3 TITLE PAGE:
CAST AND CREATIVE TEAM
- 4 A NOTE FROM THE DIRECTOR
- 5 BIOS
- 12 UPCOMING FROM ARTSCENTRIC
- 13 ABOUT ARTSCENTRIC
- 14 FEATURED SEASON ARTIST:
BRANDON J. WALLACE
- 19 ABOUT BCS
- 24 BCS STAFF



fb.com/bmorecenterstage
@bmorecenterstage

FOLLOW US ON SOCIAL MEDIA

Get updates about our community programming, upcoming events, productions, and behind the scenes content.

We rely on donations from supporters like **you** to enable the theater to serve as a place where people come together to celebrate and experience the joy of storytelling.



Please consider making a tax-deductible donation now by visiting centerstage.org/donate or **scan the QR Code.**

MAJOR FUNDING PROVIDED BY:



CELEBRATING
50 YEARS OF SERVICE
TO THE ARTS



THE CITIZENS OF
BALTIMORE COUNTY



DEAR BCS AND ARTSCENTRIC COMMUNITIES,

We could not be more excited to welcome you all to Baltimore Center Stage as we present our third collaborative mainstage show with ArtsCentric for their fabulous production of Rodgers and Hammerstein's *Cinderella*.

The value of this partnership with ArtsCentric is immeasurable. As a long-standing structure, participant, and supporter of the Baltimore arts community, it is of the utmost importance for Baltimore Center Stage to both honor and amplify the incredible work being done and performed all throughout this charming city. The continued opportunity to work closely with ArtsCentric, their caliber of work, their creative prowess, and their community influence is a treasure to the BCS theater, our staff, and those who commit themselves to positively impacting our extraordinary city through the arts.

With the catchy and classic tunes of Rodgers and Hammerstein's retelling of Disney's *Cinderella*, we are delighted to usher in this holiday season with the singing and dancing of this beloved and enchanting tale. Highlighting the value of authenticity and self-identity in charting one's own path - a message that will always land in the hearts of dreamers and doers alike - this production brings with it the challenges and discoveries of transformation and change. What is unique about this tale is that it does not pit dreamers and doers against one another, instead, it encourages us all to see that the impossible is, in fact, possible when dreams are put to action. Freedom and opportunity are essential to the fruition of your ambitions, however, there is no ambition without dreaming, no dreaming without action, no will to act without the freedom to dream.

There are not enough thanks to give to the extraordinary folks who have worked so hard to bring this production to fruition. To the BCS and ArtsCentric liaisons, to our highly skilled artisans and craftspersons, to our actors, directors, and technicians, and to all of those who have put in any behind-the-scenes work, we extend our deepest gratitude and excitement for the show to come. Thank you for choosing to act, to dream, and to make magic with us!

We are proud to share this dream with you and we hope you enjoy the show!

Stevie Walker-Webb

ARTISTIC DIRECTOR, BALTIMORE CENTER STAGE

Cinderella

(ENCHANTED EDITION)

MUSIC BY RICHARD RODGERS
BOOK AND LYRICS BY OSCAR HAMMERSTEIN II
ADAPTED FOR THE STAGE BY TOM BRIGGS
FROM THE TELEPLAY BY ROBERT L. FREEDMAN

CAST

JAIDEN NUAKO
CINDERELLA

NICK MOORE
PRINCE CHRISTOPHER

ASIA-LIGÉ ARNOLD
QUEEN CONSTANTINA

CURTIS MCNEIL
KING MAXIMILLIAN

KENYATTA V. HARDISON
STEPMOTHER

MALSHAUNA HAMM
JOY

NIKKI OWENS
GRACE

TYRELL STANLEY
LIONEL

JADE MADDEN
FAIRY GODMOTHER
Select Performances

PAM WARD
FAIRY GODMOTHER
Select Performances

ROWAN CAMPBELL
ENSEMBLE/GRACE U/S

ANGELO HARRINGTON II
ENSEMBLE/
PRINCE CHRISTOPHER U/S

PATRICK LEONARDO CASIMIR
KING MAXIMILLIAN U/S

LADY DAVONNE
STEPMOTHER U/S

NIAJA DIGGS
ENSEMBLE/JOY U/S

ANWAR THOMAS
ENSEMBLE/LIONEL U/S

DEANA CRUZ-CONNER
ENSEMBLE/QUEEN
CONSTANTINA U/S

HEINZ ADJAKWAH
ENSEMBLE/
FEATURED DANCER

ELIJAH ALI
ENSEMBLE

MUSICIANS

CEDRIC D. LYLES
PIANO CONDUCTOR

ALEX NAVARETTE
KEYBOARDS

JONATHAN COLON
CELLO / HAND
PERCUSSIONS

THEMBA MKHATSHWA
AFRICAN PERCUSSIONS

KEVIN KEARNY, JR.
DRUMS

ADRIAN MITCHELL
TRUMPET

THE CREATIVE TEAM

RICHARD RODGERS
OSCAR HAMMERSTEIN II
MUSIC, LYRICS,
ORIGINAL BOOK

KEVIN S. MCALLISTER
DIRECTOR

RICARDO BLAGROVE
ASSISTANT DIRECTOR

CEDRIC D. LYLES
MUSIC DIRECTOR

SHALYCE HEMBY
CHOREOGRAPHER

PERI ELLIS
ASSISTANT
CHOREOGRAPHER

DANIEL CONWAY
SCENIC DESIGNER

LARRY BOGGS
COSTUME DESIGNER

LARRY PETERSON
HAIR & WIG DESIGNER

MAX DOOLITTLE
LIGHTING DESIGNER

PAUL CALLAHAN
ASSISTANT
LIGHTING DESIGNER

ALEC GREEN
SOUND DESIGNER

ANTWAN HAWKINS JR.
PROPS DESIGNER

AWA SAL SECKA
DIALECT COACH

JORDAN ROSS
STAGE MANAGER

CEDRIC KHALIL
ASSISTANT
STAGE MANAGER

A NOTE FROM THE DIRECTOR



If you're here, you are like me. You believe in magic and adventure. You believe in **"happily ever after."** You believe in the power of fairy tales. As children, we heard these tales at bedtime or as we gathered around the TV and watched them with loved ones. The glass slipper, the beanstalk, the magic carpet, and the Big Bad Wolf all became a part of our individual childhood stories.

As adults, we realize how much these stories unknowingly taught us about overcoming challenges, facing our biggest fears, and how to fight for true love. So, we continue telling our tales to future generations, because as kids (and even as adults), *The Pied Piper* brought us joy. *The Three Little Pigs* showed us confidence. Most importantly, *Cinderella* taught us how to love. These fairytales are reflections of the people we have grown up to become. It makes sense that we would pass these stories down for centuries.

But what happens when the majority of books you can give a young BIPOC child present faces, features, and family lifestyles that are unfamiliar to them? What happens when a child sees a cartoon where every character that shares their identity is turned into an animal? When you think of Rapunzel, what color is she? Little Red Riding Hood? Sleeping Beauty? Why do you hold that view of these characters? The answer is simple. It's all we've ever known. There's no need to change that. Or is there? Many people are unaware that the story of Cinderella dates back to 7 BC and the tale is originally set in Egypt. Was the original Cinderella a person of color? No, but she was a Greek girl who fell in love with an Egyptian king.

Egypt.

Africa.

Instantly, my wheels begin to turn.

I have seen productions of *Cinderella* set all over the world, in times of past and future. I've even seen productions of *Cinderella* featuring women of color, but I had never seen a production of *Cinderella* featuring African cultures with an all-black cast... Until now!

Our production of *Cinderella* is unlike anything ArtsCentric has ever done before. It's truly something special. The staging, the choreography, the music, and the designs are all rooted in one simple truth: Fairytales can make the world a better place. If you're sitting in this audience then you believe it as well.

Maybe you've come to see this production because of the joy this story has brought to your life for years. Perhaps you've come to see this production because you want someone younger than you to experience the power of Cinderella's story for the first time. Or, maybe you've come because somewhere deep down inside you didn't know just how much you needed to see a black Cinderella.

Whatever your reason for coming to see the show, we celebrate you. We honor you and we thank you.

"Impossible things are happening every day." I hope this beautiful work of art is a reminder of that for us all.

Happy Holidays !!!

Kevin S. McAllister

DIRECTOR, *CINDERELLA*
ARTISTIC DIRECTOR, ARTSCENTRIC, INC.



JAI DEN NUAKO
CINDERELLA

Jaiden Nuako is a junior at Towson University. This is her ArtsCentric debut as she steps into the role of Cinderella. Some of her favorite roles include Fiona (*Shrek the Musical*), & Hope Cladwell (*Urinetown*). She's excited to bring this story to life and share it with her family, friends and CLGFGM. To God be the glory!



NICK MOORE
PRINCE CHRISTOPHER

Nick is delighted to make his first debut at Center Stage! Moore is a classically trained actor who has been performing since a child. Born and raised in Baltimore, Maryland, he grew up with high proficiency in percussion and singing. While taking his studies to major in Theatre at York College of Pennsylvania, he performed in a school production of the well known play *Fences* as Troy Maxson. Nicolas dedicates this performance to his living mother.



ASIA-LIGÉ ARNOLD
QUEEN CONSTANTINA

AEA Eligible. Asia-Ligé is grateful to return to ArtsCentric, as well as Baltimore Center Stage, for another production. She has been an Instructor/Adjunct Instructor in Psychology at Bethune-Cookman University for 12 years. REGIONAL: ArtsCentric: *CROWNS, The Wiz*; Constellation Theatre: *Once On This Island*; Iron Crow Theatre: *Collective Rage: A Play in 5 Betties, The Rocky Horror Show, Head Over Heels*; Toby's Dinner Theatre: *Grease, Escape to Margaritaville, Sister Act*; Spotlighters Theatre: *Beehive:*

The 60's Musical; ZACH Theatre: *CROWNS, Once On This Island*. THEATER: *Ain't Misbehavin', For Colored Girls..., Shakin' the Mess Outta Misery, Smokey Joe's Cafe, You're A Good Man...;* RADIO: WAPN 91.5 FM, WBCC AM 830; FILM/TV: *Courage Under Fire, MTV's Snowed In, Tornado!*; EDUCATION: Morgan State University (in progress: Ed.D. in Urban Educational Leadership), Bethune-Cookman University (M.S. in Counseling), Capella University (M.S. in Educational Psychology), Bethune-Cookman College (B.S. in Psychology).



CURTIS MCNEIL
KING MAXIMILLIAN

Curtis McNeil is delighted to be performing the role of King Max. Curtis is an award winning Actor and Film Director. Curtis started his theatrical career at Lake Clifton Eastern High. Playing his first lead as Purlie in *Purlie* by the late and great Ozzie Davis. Since then Curtis has performed in several projects around the globe playing roles from C.J. Memphis in, *A Soldiers Play* by August Wilson, to Duke Orsino in Shakespeares, *Twelfth Night*. Curtis was last seen on stage as Kenyatta Shakur and has since been

directing film and video for his small production company named, CnT Productions LLC. He wishes to thank every person in attendance, "for there is no theater without an audience". Further credits for his career in the arts should be given to God, family, Dr. Hugh Carey, Scott Blanks, Dr. Kershaw, Dr. High, and a host of other. Curtis's motto is "let make magic!" God's blessing.



KENYATTA V. HARDISON

STEPMOTHER

Kenyatta is excited to be back with ArtsCentric/Center Stage. A graduate of The Baltimore School for the Arts and The Catholic University Of America. Has dedicated 28 years of being a music educator in Baltimore City. Former Director of the world-renowned Cardinal Shehan School Choir, Owner and Director of Y.A.T.T.A.S. Performing Arts Program Celebrating 27 years. Evillene, *The Wiz* with ArtsCentric. Her Arena Players credits include Emma in *The Tap Dance Kid*, *Bubbling Brown Sugar*, Sr Hubert in *Nunsense*, Helen in *Mahalia*, and Phyllis in *Flowers for Phyllis*. This show is dedicated to my Mother, Sylvia Hardison.



MALSHAUNA HAMM

JOY

ArtsCentric: *Dreamgirls* (Joann/Les Styles/Effie (cover), *Women Without Virtue*, with Single Carrot Theatre (Mother Mary Lange/Bess), *The Wiz* (Aunt Em/Ensemble) Education: Towson University (B.S. Environmental Science & Studies/Chemistry) IG: @sheisshauna_



NIKKI OWENS

GRACE

Regional: ArtsCentric: *The Wiz* (Ensemble, Addaperle u/s Evillene u/s), *Four Women: Catlett, Holiday, Richardson, Scott* (Elizabeth Catlett/Ensemble), *Dream Girls* (Swing), *Crowns* (Mabel), *Once on This Island* (Mama Eaurlie), DC Theater Alliance: *The Bluest Eye* (Mrs. Breedlove) IG: @niknak0128



TYRELL STANLEY

LIONEL

Tyrell Stanley is thrilled to be back with ArtsCentric at BCS. Local Credits include The Kennedy Center TYA: *Look Both Ways* (Ensemble); SIGNATURE Theater: *Passing Strange* (Youth, Terry u/s) *The Color Purple* (Swing); Olney Theatre Center: *Kinky Boots* (Swing); Keegan Theatre: *Memphis* (Ensemble, Bobby u/s). The Heritage Ensemble Theatre Company: *Confessions of a Black Cowboy* (Nat Love/Willie Kennard); BCS/ArtsCentric: *Dreamgirls* (C.C. White); ArtsCentric: *Once on This Island* (Armand), *The Wiz* (Ensemble), *Aida* (Ensemble), *Memphis* (Ensemble); Cockpit in Court: *Sister Act* (TJ), *Gypsy* (Yonkers); TV/FILM: HBO: *We Own This City*; Paramount+: *Lioness*. @stagerightt.



JADE MADDEN

FAIRY GODMOTHER SELECT PERFORMANCES

Jade Madden is an international recording artist, based in Maryland, USA. As a proud alum of Morgan State University and the Sigma Alpha Iota sisterhood, Jade has had the pleasure of fostering amazing connections throughout the music community. She has performed on many stages from Carnegie Hall to NBC's *Saturday Night Live* alongside JMFS and major British rock band, Coldplay! With all of these great supporting accomplishments,

God saw fit to allow Jade to release her very own debut single titled 'Spared' in September 2023! Visit www.jademaddensings.com to stay connected.



PAM WARD

FAIRY GODMOTHER *SELECT PERFORMANCES*

Pam Ward, a native of Washington, DC developed her love and talent for singing in choirs, groups and bands throughout the DC area. She has performed in various productions through the years: *SPUNK* (Tribute Productions/African Continuum Theatre); *Seussical* (Red Branch Theatre); *Black Nativity* (Theater Alliance); *Swingtime*, *Arlen Blues & Berlin Ballads*, by *George and Ira Gershwin*, *From U Street to the Cotton Club* (In Series); *Sincerely, Holidays*, *Chicago*, *Black Nativity* and *Little Shop of Horrors* (Artscentric).

Pam truly appreciates her husband, sons and mom for their support and flexibility to allow her to continue to fulfill her passion for the arts. Also, she is happy to be with the ArtsCentric family again!



ROWAN CAMPBELL

ENSEMBLE/GRACE U/S

Rowan Campbell is a DC based actor. She is a graduate from Duke Ellington School of the Arts with a degree in vocal performance. She completed her degree in drama from the University of California, Irvine in 2019. While completing her degree she was also a founding member of UC Irvine's black theater group, Black Door Theater Company. Black Door provides a space for black actors to create, perform, and express artistic autonomy. She has performed in various shows ranging from *The Vagina Monologues* and *Women Playing Hamlet* to *Something Rotten*. She is incredibly excited to be part of her first ArtsCentric production.



ANGELO HARRINGTON II

ENSEMBLE/PRINCE CHRISTOPHER U/S

Angelo Harrington II is thrilled to make his ArtsCentric debut in *Cinderella*. He's most recently been seen at Toby's Dinner Theatre in *Sister Act* (Swing), and in *Grease* (Ensemble, Doody/Teen Angel U/S). He's super appreciative of his cast and everyone who has worked and helped bring this beautiful show to life. A special thanks to the ArtsCentric team for this amazing opportunity, and to his family for always supporting him! Enjoy the show!

@anjelloperez



PATRICK LEONARDO CASIMIR

KING MAXIMILLIAN U/S

As a company member Patrick is Happy to be returning to ArtsCentric! Regional- Olney Theatre: *Fela!*(General), KeeganTheatre: *Memphis* (Ensemble Delray U/S) Shakespeare in Love (Robin), ArtsCentric: *Little Shop of Horrors* (Orin), *Snapshots* (Darryl). *Black Nativity* (Joseph), *Aida* (Ensemble-Dance Captain), *Chicago* (Ensemble- Dance Captain), National Tours: *VT Dance* - "What's Going On" (Company Member), *Universal Studios of Orlando* - *Performing Artist*, Regional: Bishop

McNamara High - Resident Choreographer, The Florida State University, Resident Choreographer Kollage Dance Troupe, *Starmakers Academy of Dance - Instructor* (Role), International: Edinburgh Arts Festival - Performing Artist, Education: Master of Business Administration, Bachelor of Arts - Dance, Bachelor of Science - Business Administration. Follow me on IG @leonardo_de_cashmere



LADY DAVONNE STEPMOTHER U/S

Lady Davonne (Andrea Gerald) is an actress, singer, teacher and songwriter. She has performed with numerous productions throughout the DC Metropolitan Area including *Little Shop of Horrors* (ArtsCentric), *The Very Last Days of the First Colored Circus* and *Veils* (Restoration Stage), and *Use All Available Doors* (Pinky Swear). She was nominated for Outstanding Lead Actress in a Musical by the Washington Area Theater Community Honors (WATCH) for her role as Celie in *The Color Purple* (Tantallon

Community Players). Lady Davonne recently released her single, "So Good", available on all digital media outlets. She is a native of the DC Metropolitan Area and a graduate of Duke Ellington School of the Arts (Theater) and Howard University (Musical Theater, BFA). On social media at @ladydavonne.



NIAJA DIGGS ENSEMBLE/JOY U/S

ArtsCentric: *Aaliyah Tribute* (dancer); *The Musical of the BodyGuard*; Starring Deborah Cox (dancer), Olney Outdoor live, *Just Arts* (dancer), Expressions Dance Co. (dancer), American College Dance Association (Gala choreographer). Education: AA in Fine Arts of Dance (Anne Arundel Community College) and Expressions Dance Company. She aspires to become a well rounded performer and to continue teaching various styles of dance.



ANWAR THOMAS ENSEMBLE/LIONEL U/S

Anwar is excited to return to the ArtsCentric stage. Previous credits include: *Snapshots*, *Black Nativity*, and *Aida*. Primarily an educator, Anwar has been teaching/choreographing in the State of Maryland for 15 years. He has had his works presented at the American College Dance Festival, numerous state dance festivals and galas. Most notable his Helen Haynes nomination for Outstanding Choreography: *The Color Purple* at Toby's Dinner Theater. "I'm a firm believer that with hard work, determination and passion, anything is possible"



DEANA CRUZ-CONNER ENSEMBLE/QUEEN CONSTANTINA U/S

Deana is thrilled to be part of this wonderful production with ArtsCentric at Baltimore Center Stage. Her credits include performing onstage in outstanding ArtsCentric productions of *The Color Purple*, *Dreamgirls*, *Chicago*, *Sister Act*, and *La Cage Aux Folles*. In the last few years, Deana has been blessed to expand her talents to Costume Design. Her work has been seen in

productions of *We are Proud* and *RENT* at ArtsCentric in Baltimore. At Spotlighters Theatre in *Zanna Don't* and *title of show*. *She Loves Me*, *Cinderella*, *The Lightning Thief*, *The Wedding Singer* and most recently *Sondheim on Sondheim* at Silhouette Stages. Deana is delighted to be a member of this phenomenal cast and thanks her family and friends for their unwavering love and support.



HEINZ ADJAKWAH
ENSEMBLE/FEATURED DANCER

Heinz Adjakwah began his path in dance upon joining an African dance troupe in middle school while in Ghana. His love for the art form grew when he moved to the United States and began his studies in Ballet, Modern, Jazz, Contemporary and Tap in addition to his training in African dance. He teaches Afro beats, Ballet, Contemporary and Jazz in the metro DC area. His love for musical theatre blossomed during the rehearsal process for *Chicago*, one of his first shows with ArtsCentric. He has performed with The

Marvin Gaye Project, Baltimore Dance Project, Howard County Ballet, Rebollar Dance, and Dakshina. He holds a dual degree in Dance and Health Administration and Public Policy. This will be his fifth theatrical production with ArtsCentric and he is thrilled to be a part of the ensemble.



ELIJAH ALI
ENSEMBLE

Elijah Ali, Native of Charlotte, NC. ArtsCentric: *Dreamgirls*-Ensemble (2021) *Unmarked* -Narrator 2022, *Little Shop of Horrors* - Ensemble 2017. Vocal Ensembles: Carter Legacy Singers, Dynell Damon & Greater Works. NC Theater Experience: *Be A Lion*, *A Walk In My Shoe*, *Daughter Of The King*, *The Gift*. Education: Johnson C Smith University

RICHARD RODGERS & OSCAR HAMMERSTEIN II
MUSIC, LYRICS, ORIGINAL BOOK

After long and highly distinguished careers with other collaborators, Richard Rodgers (composer, 1902-79) and Oscar Hammerstein II (librettist/lyricist 1895-1960) joined forces in 1943 to create the most successful partnership in American Musical Theatre. *Oklahoma!* (1943), the first Rodgers & Hammerstein musical, was also the first of a new genre, the musical play, blending Rodgers' sophisticated style of musical comedy (which he had perfected in a 25-year partnership with lyricist Lorenz Hart) with Hammerstein's innovations in operetta (conceived in collaboration with such composers as Jerome Kern). Their shows that followed

included: *Carousel*, *South Pacific*, *The King and I*, and *The Sound of Music*. They wrote one movie musical, *State Fair*, subsequently adapted to the stage, and one for television, *Cinderella*. First broadcast live with Julie Andrews in 1957, remade with Lesley Ann Warren (1965), and again with Whitney Houston and Brandy (1997). R&H's *Cinderella* made its Broadway debut in 2013

KEVIN S. MCALLISTER
DIRECTOR

Kevin S. McAllister is a director, actor, singer, former professor, and Artistic Director of ArtsCentric, which he co-founded. He has directed over 50 productions for ArtsCentric. Favorites include: *Sincerely, Me!*, *Snapshots*, *Little Shop of Horrors*, and *Chicago*. He will also lead upcoming productions

at Olney Theatre Center and Ford's Theatre in the upcoming season. Outside of the DMV he serves as the Assistant Director Fellow for the national tour and recently closed Broadway production of *Come From Away*. He has won 2 Helen Hayes Awards for acting and has been nominated for 8. He can also be heard on the recent Broadway revival cast recording of *Caroline, or Change* where he portrayed The Dryer and The Bus. When not on stage, he works regularly with young minds around the country as a clinician.

CEDRIC D. LYLES **MUSIC DIRECTOR**

Cedric D. Lyles is an artist driven by a passion for the arts and for creatively inspiring others. Arts Manager, Educator, and Performing Artist are just a few of the titles that aptly describe him. A Washington, D.C. native with childhood musical training from the Levine School of Music, Mr. Lyles is a versatile pianist and musician. As a performing artist, Cedric has worked as a musical director for Everyman Theater, Toby's Dinner Theatre, Towson University, Cecil Community College, Troika Bermuda, Cockpit in Court, Vagabond Theater and Baltimore City, Baltimore County, and Howard County Schools. He's also appeared on stage as a performer in *Dreamgirls*, *Songs For a New World*, *Xanadu*, *The Wild Party*, and Lillian Hellman's *The Children's Hour*. Cedric is known for his work as a composer and an arranger. His original work *7:32 the musical* was featured at the 2012 New York Musical Theater Festival (NYMF) in addition to winning Best Musical in 2009 at The Kennedy Center's American College Theater Festival (KC-ACTF). His most recent work, *Delilah: a new musical*, was featured at The Atlas in Washington, D.C. and at the 2021 Kennedy Center Page to Stage Festival. Cedric continues to serve ArtsCentric, Inc, as founding board member, and as the volunteer Director of Operations.

SHALYCE HEMBY **CHOREOGRAPHER**

Shalyce Hemby currently serves as Director of Creative Content and Resident Choreographer with ArtsCentric, a position she's held since 2013. Her work has been seen at theaters throughout the DC Metropolitan Area and Baltimore. She received a Helen Hayes Nomination for Best Choreography for Toby's Dinner Theater production of *Dreamgirls*. A constant educator, Shalyce has also worked with Universities, arts organizations, as well as independent schools. @sugasheadance

PERI ELLIS **ASSISTANT CHOREOGRAPHER**

SELECTED REGIONAL: Artscentric/Olney Theatre/Everyman Theatre: *The World Goes Round* (Associate Choreographer), *Motorhouse: Don't Bother Me, I Can't Cope* (Co-Choreographer/Ensemble), Artscentric/Baltimore Center Stage: *Dreamgirls* (Dance Captain/Ensemble), Sankofa Dance Theatre: *The Fifth Element* (Choreographer/Ensemble), **EDUCATION:** Virginia State University (Bachelor of Arts), New York Film Academy Acting Conservatory, University of the Arts Dance Intensives, Suitland's Center for the Performing Arts, The Kennedy Center's Dance Theatre of Harlem Pre-Professional Program. A special thanks to my family, friends, and ancestors for their continued support!

DANIEL CONWAY **SCENIC DESIGNER**

Broadway: Marriott Marquis Theatre; Manhattan Theatre Club; Regional: Chicago Shakespeare Theatre; Signature Theatre; Studio Theatre; South Coast Rep; Milwaukee Rep; Hartford Stage; The Juilliard School; Arena Stage; The Shakespeare Theatre; Cincinnati Playhouse; Woolly Mammoth Theatre; Ford's Theatre; Roundhouse Theatre; The Wilma Theater; The Arden Theatre; The Berkshire Theatre Co. Set

designer and collaborator for Penn and Teller, Las Vegas and the CW Network: *"Fool Us!"* 24 Helen Hayes Award nominations- four awards for Outstanding Set Design. Anderson Hopkins Award for Excellence in the The Washington DC Theatre community. Featured American set designer at The Prague Quadrennial for International Stage Design 2019.

LARRY BOGGS COSTUME DESIGNER

Larry Boggs, a multifaceted artist and Costume Designer, hails from Clinton, Maryland, having received a BA from Morgan State University and an MA from NYU. Recent credits showcase his remarkable talent: *CROWNS* and The Young Playwright's Festival at Baltimore Center Stage, *Once On This Island* at ArtsCentric, and *And The World Goes 'Round* at Olney Theater Center and Everyman Theater. Larry's contributions to the performing arts are both captivating and inspiring. His artistry continues to shine, leaving an indelible mark on the stage. Explore more about him at: www.all-squared-away.org and on Instagram at @AllSq2Away

MAX DOOLITTLE LIGHTING DESIGNER

Mid-Atlantic Region: Ford's Theatre, Olney Theatre Center, Woolly Mammoth, Folger Theatre, Signature Theatre, Round House Theatre, Mosaic Theatre, Theatre Alliance, Theatre J, Rep Stage, Kennedy Center/Second City, Imagination Stage, Forum Theatre, Adventure Theatre, Artscentric, Constellation Theatre, Shakespeare Theatre Academy for Classical Acting, Pointless Theatre Co, NextStop Theatre. NYC includes Ars Nova, Juilliard School, Theatre Row, New Ohio Theatre, New World Stages. Regional includes Geffen Playhouse, Kitchen Theatre Company, Santa Fe Playhouse, Great Lakes Center for the Arts, Pennsylvania Shakespeare Festival, Fulton Theatre. Lighting direction for television includes *Anderson Cooper 360*, *Piers Morgan*

Live. Aboard Cruise Ships: Wine Lovers, The Musical. BFA: Ithaca College. MFA: University of Maryland.

ALEC GREEN SOUND DESIGNER

Alec Green is a multitalented guitar player, singer-songwriter, and audio engineer. Alec graduated from the prestigious Peabody Institute of the Johns Hopkins University with degrees in classical guitar and audio engineering. Green is also the creative video producer and director for the Marvin Hamlisch International Music Awards. Alec's creative endeavors include the release of his album *Summer Storm*, playing classical guitar recitals, performing with the bands *Dollar Store Fire*, and *Second Place*, and working as lead sound engineer for the popular band *Millennium*. Alec Green also teaches guitar as part of the faculty at Washington College.

ANTWAN HAWKINS JR. PROPS DESIGNER

Antwan Hawkins Jr, also known as "GREEYO." is a Baltimore-based multi-disciplinary artist known for his artistic dexterity and unapologetic approach to expressing Africa's influence on civilization. His childhood theatrical background helped hone his skills in acting, singing, dancing, poetry, and lyricism. A graduate of North Carolina Central University with a Bachelor's degree in Theatre Performance, he mastered skills such as light/sound design, carpentry, scenic design, play/screenwriting, and directing. Since then, he's expanded into multimedia and music production, event curation, and community organizing. By day, he's a high school Multimedia/Theatrical Production and Journalism teacher; by night, he operates his multimedia production and photography studio, LaRae Amoor Studios, in Baltimore's Station North Arts District.

BIOS

JORDAN ROSS STAGE MANAGER

Jordan Ross has worked with ArtsCentric since 2014 as a volunteer, backstage crew, scenic charge, Assistant Stage Manager and Stage Manager. She has worked on various productions throughout the years and is happy to once again be joining ArtsCentric on another creative journey. Jordan graduated from University of Maryland Baltimore County with a BA in Design and Production. She would like to thank God, her family and ArtsCentric for the countless opportunities and unwavering support.

CEDRIC KHALIL ASSISTANT STAGE MANAGER

Cedric is thrilled to return to the ArtsCentric family! They have contributed to many past ArtsCentric productions as the Lighting Designer for *The Wiz* and *Co-Lighting Designer* for *Dreamgirls*, *Little Shop of Horrors*, *La Cage*, and *Snapshots*. Cedric's professional career began at Toby's Dinner Theatre's youth theater as the Production Stage Manager before continuing in roles such as Assistant Technical Director, Costume Designer, and Marketing Director for the youth theater company. Today, Cedric continues to illuminate the world of drama, lending their expertise to school drama programs as a Lighting Consultant and Designer.

UPCOMING FROM ARTSCENTRIC

ArtsCentric Presents

A MOTOWN Christmas

DECEMBER 22 - DECEMBER 31

ONLY 8 PERFORMANCES

ArtsCentric's holiday season just got a little cherrier! "Ho ho ho..."Join us for "A Motown Christmas," a riveting musical experience packed with your favorite Motown Christmas hits and more. Come experience the magic of ArtsCentric in our home space in the Remington neighborhood with amazing, nationally renowned artists for "A Motown Christmas"

ArtsCentric's original revues and musical works never fail to gather the best artists in town to sing "true to the classics" while interpreting the ArtsCentric way. These amazing artists will battle it out musically, dazzle you with harmonies and choreography, comfort you with a few duets and feed your soul with the spirit of Christmas.

Visit www.ArtsCentric.org and purchase your tickets. Seating is limited for this 2-weekend run. You don't want to miss this one!

*Performances will take place at ArtsCentric | 2600 North Howard Street | Baltimore, Maryland

Cinderella
Savings

~~\$35~~ \$25

Use Promo Code

ACBCS23
at checkout and
SAVE \$10!



ArtsCentric, Inc. is an African-American performing arts organization; a color-conscious organization committed to reexamining traditional roles in the arts, advancing original stories of specific cultures, and fostering educational advancement to strengthen the community through the power of theatre. ArtsCentric approaches the arts with a color-conscious lens when creating community-oriented and enriched education programs. The organization started with a dream in 2003, when the founders dreamed of creating more performance opportunities for young African-American artists like themselves. What began as a dream slowly morphed into an experiment: a core group of young artists armed with talent and fresh ideas, committed to producing and performing. ArtsCentric forged partnerships and relationships with Baltimore/D.C. area organizations which paved the way for what would become the fiber of ArtsCentric’s mission and model: providing entertainment that is color-conscious, community-oriented, educational and enriching. Today, ArtsCentric emerges as a 501(c)3 nonprofit arts organization, producing five productions of traditional, contemporary and original staged-shows per season. In addition to our mainstage productions, ArtsCentric holds two summer institutes for young artists, and offers arts training via ArtsCentric Academy through distance learning and traditional in-person classrooms. Ultimately, ArtsCentric strives to positively impact a broad and diverse audience base, and uphold high standards of quality entertainment, while using the arts to inform, change, and enhance lives, one audience at a time.

ArtsCentric’s mission and core activities address three problems: racial inequity in the performing arts; a lack of opportunities for low-to-moderate-income artists of all ages to receive professional training for performance, education, and administrative careers in the arts; and, affordable access to the arts and cultural enrichment activities.

LEARN MORE AT **ARTSCENTRIC.ORG**

ARTSCENTRIC STAFF

ARTISTIC DIRECTOR
Kevin McAllister

DIRECTOR OF FINANCES
Kelli Blackwell

DIRECTOR OF CREATIVE CONTENT
RESIDENT CHOREOGRAPHER
Shalyce Hemby

DIRECTOR OF OPERATIONS
Cedric D. Lyles

DIRECTOR OF CASTING
Asia-Ligé Arnold

DIRECTOR OF DEVELOPMENT
Dr. Sequina DuBose, DMA

BOARD OF DIRECTORS

Della Hatcher
PRESIDENT

Brenda Brandom
Regina Dubose

Shalyce Hemby

Kelli Blackwell
VICE PRESIDENT

Sequina DuBose, DMA

Kevin McAllister

Cedric D. Lyles
SECRETARY

Darrin Hawkins

Marco Merrick

SPECIAL THANKS

Emmanuel Episcopal
Figure 53

T Rowe Price
MSAC

Bunny Hathaway

MEET BRANDON

Our BCS 2023/24 season artist



BRANDON J. WALLACE is a Baltimore-based cartoonist and illustrator. He was born in Houston, Texas, and raised in the DC metropolitan area.

Wallace holds a Bachelor of Fine Arts in Illustration from the Maryland Institute College of Art and a Master in Fine Arts in Illustration from Syracuse University.

Wallace's work is created using the digital drawing application, Clip Studio Paint. He is inspired by history, nature, comic books, film, and animation.

In addition to his creative practice, Wallace has taught as an adjunct art professor at multiple universities.

See more of Brandon's work and learn more about him at brandonjwallace.com or follow him on instagram @bwallart.



23
24 SEASON

SUNDAYS @ 5:30PM
AT SHRIVER HALL

“Baltimore’s finest importer
of classical music talent.”

—The Sun



**GET YOUR
TICKETS TODAY!**

SHRIVERCONCERTS.ORG
410.516.7164

DEC 3
**KALEIDOSCOPE CHAMBER
COLLECTIVE**

Works by Schubert, Beach, Walker, Price

JAN 14
JULIA BULLOCK SOPRANO
BRETTON BROWN PIANO
*Works by Barber, Poulenc, Weill, Strauss, Berg, Converse,
Rodgers & Hammerstein, Dylan, Dvořák, Cotten*

FEB 4
GARRICK OHLSSON PIANO
Works by Beethoven, Mamlok, Schubert, Chopin

MAR 10
MARK PADMORE TENOR
MITSUKO UCHIDA PIANO
Schubert: Winterreise

APR 7
QUATUOR ÉBÈNE
Works by Mozart, Schnittke, Grieg

APR 21
JOHANNES MOSER CELLO
MARC-ANDRÉ HAMELIN PIANO
Works by Boulanger, Hamelin, Debussy, Franck

Craig Wallace Returns as Scrooge!



A Christmas Carol



Nov. 17 - Dec. 31, 2023

By Charles Dickens; Adapted by Michael Wilson; Directed by Michael Baron

Season Sponsors: Chevron and Lockheed Martin Corporation

Lead Sponsor: Charter Communications; Sponsors: The Home Depot,
National Retail Federation and Siemens Corporation

Tickets Available! | www.fords.org | (888) 616-0270

Photo of Craig Wallace and the young cast of *A Christmas Carol* (2022) by Titus Ogilvie-Laing.

THE BALTIMORE MUSEUM OF ART

OCTOBER 1, 2023—JANUARY 7, 2024

Making Her Mark

A History of Women Artists
in Europe, 1400–1800

Making Her Mark rewrites art history to reveal and celebrate four centuries of creativity by women in Europe. Experience more than 200 works of art made by women—from paintings, prints, illustrations, and sculptures to tapestries, silver, ceramics, embroidery, lace, furniture, and more.

NAMED A MUST-SEE EXHIBITION BY VOGUE

GET TICKETS AT [ARTBMA.ORG](https://artbma.org)

Elisabeth Louise Vigée-LeBrun. *Princess Anna Alexandrovna Galtzina* (Detail), c. 1797.
Baltimore Museum of Art: The Mary Frick Jacobs Collection, 1938.192

BMA
BALTIMORE
MUSEUM OF
ART

CAMP BALTIMORE CENTER STAGE



ARTISTIC RETROSPECTIVES

Campers will spend two weeks creating artistic work for a retrospective to be shared at the end of each session. Throughout their time at Camp BCS, students will practice **artistic skill building through theatre games and exercises, writing, visual arts, movement with music and STEAM workshops.**

Sign up now to lock-in an **EARLY BIRD DISCOUNT** of **\$75 OFF!***

**Discount valid December 1 - 31, 2023. Offer cannot be combined with other discounts. For more than 2 children please call the box office 410.332.0033*

CAMP DATES Session 1: June 25-July 5 *NO CAMP THURS, JULY 4
Session 2: July 8-July 19
Session 3: July 22-August 2
Each session runs from 8:30 AM - 4:15 PM

CAMP COST: \$750 scholarship opportunities are available

Register at **CENTERSTAGE.ORG** | **QUESTIONS:** education@centerstage.org

VIRTUAL
STUDENT
MATINEE
LIBRARY

KNOW A K-12
CLASSROOM TEACHER?



The Virtual Student Matinee Library is a **FREE** online repository of filmed versions of some of Baltimore Center Stage's plays and programs with corresponding program material such as curricula and program guides to prompt questioning and classroom discussion.

Students can view productions in the classroom environment and collaborate with their peers to further their artistic learning in a creative way. Our curriculum is aligned with MSDE common core standards to support learning goals meaningfully while uplifting aspects of the creative artforms and social emotional skills inherent in theater.

SIGN-UP AT **CENTERSTAGE.ORG**

Founded in 1963 and designated the State Theater of Maryland in 1978, Baltimore Center Stage provides the highest quality theater and programming for all members of our communities, including youth and families, under the leadership of Artistic Director Stevie Walker-Webb and Managing Director Adam Frank. Baltimore Center Stage ignites conversations and imaginations by producing an eclectic season of professional productions across two mainstages and an intimate 99-seat theater, through engaging community programs, and with inspiring education programs. Everything we do at Center Stage is led by our core values—chief among them being Access For All. Our mission is heavily rooted in providing active and open accessibility for everyone, regardless of any and all barriers, to our Mainstage performances, education initiatives, and community programming.

BOARD

Sandy Liotta
PRESIDENT

Jill Pratt
VICE PRESIDENT

Scot T. Spencer
VICE PRESIDENT

Brian M. Eakes
TREASURER

Jordan D. Rosenfeld,
SECRETARY

Dr. Nia Banks

Sharonne Bonardi

Durryle Brooks, PH.D, M.A.

Rob Burks

Rob Daniels

Jed Dietz

Walter B. Doggett III

Jane W.I. Droppa

Amy Elias

Rob Furlong

Andrew Giddens

Megan Gillick

Cheryl O'Donnell Guth

Elizabeth J. Himelfarb
Hurwitz

Chris Jeffries

The Reverend Kobi Little

John McCardell

Dawn Moore

Charles J. Morton, Jr.

Luna Ravenna

E. Hutchinson Robbins, Jr.

Jesse Salazar

Letieri R. Schnor

Dr. Bayinnah Shabazz

Robert W. Smith, Jr.

Stephanie M. Smith

Scott Somerville

Deborah St. Lawrence
Thompson

Chrissy Thornton

Julie Wolf

TRUSTEES EMERITI

Edward C. Bernard

Katharine C. Blakeslee

James T. Brady +

C. Sylvia Brown

August J. Chiasera

Lynn Deering

Juliet A. Eurich

Suzan Garabedian

Martha Head

John Keenan

E. Robert Kent, Jr.

Joseph M. Langmead

Kenneth C. Lundeen

Marilyn Meyerhoff +

J. William Murray

Charles E. Noell III

Esther Pearlstone

Phillip J. Rauch

Monica Sagner

George M. Sherman +

J.W. Thompson Webb

+ In Memoriam

THANK YOU

The following list includes gifts of \$250 or more made to the Baltimore Center Stage Annual Fund April 18, 2022 through October 18, 2023. Although space limitations make it impossible for us to list everyone, we are grateful for your continued support.

SEASON SPONSOR

Andrew W. Mellon Foundation
Ellen and Ed Bernard
Jane and Larry Droppa
Sandy Liotta and Carl Osterman
Stephanie Ybarra

PRODUCERS CIRCLE

James and Janet Clauson
Ken and Elizabeth Lundeen
Thalheimer-Eurich Charitable Fund, Inc.

ARTISTS CIRCLE

Anonymous
Brian M. and Denise H. Eakes
Charles E. Noell III
Francie and John Keenan
Juliet A. Eurich and Louis B. Thalheimer
Keith Lee
Mary Catherine Bunting
Megan M. Gillick
Nancy Dorman and Stanley Mazaroff
Pearlstone Family Fund
Rebecca Henry and Harry Gruner
Rob and Beth Furlong Household
Robert E. Meyerhoff and Rheda Becker
Sandra Levi Gerstung
Sharon and Jay Smith
Townsend and Bob Kent
Walter B. Doggett III and Joanne Frantz Doggett

PLAYWRIGHTS CIRCLE

Anonymous
Baltimore Community Foundation

Baltimore Homecoming
Barbara Payne Shelton
Bradie Barr and Tollie Miller
Christopher and Wendy Jeffries
Craig and Deborah Thompson
Ellen J. Remsen Webb and J.W. Thompson Webb
Fidelity Charitable
Fredye and Adam Gross
Jill Pratt
Jonathan Fishman
Julie and Jeffrey Wolf Household
Lynn and Philip Rauch
MurthyNAYAK Foundation
Paddy and Chuck Morton
Patricia and Mark Joseph, The Shelter Foundation
Robert and Kim Burks
Sally Digges and James Arnold
Sheela Murthy
Shelter Foundation, Inc.
T. Rowe Price Program For Charitable Giving
Ted and Mary Jo Wiese
The Annie E. Casey Foundation
The Jacqueline C. Hrabowski Fund, in memory of George Sherman
Tzi Ma

DIRECTORS CIRCLE

Anonymous
Cathy MacNeil-Hollinger and Mark Hollinger
David and Elizabeth J Himelfarb Hurwitz
Diana and Clinton Daly
Dick Gamper

Dr. Richard H. Worsham and Ms. Deborah Geisenkotter
Francine and Allan Krumholz
George and Holly Stone
Hugh and Leanne Mohler
Jed Dietz and Julia McMillan
Jim and Mary Miller
JJJ Charitable Foundation
Kim Gingras and Gene DeJackome
Margaret O. Cromwell Family Fund
Michelle and Nathan Robertson
Nelson and Sara Fishman Family Foundation
Patricia Yevics-Eisenberg and Stewart Eisenberg
Ralph and Claire Hruban
Renee Samuels and Jordan Rosenfeld
Robert and Cheryl Guth
Sandra and Thomas Hess
Scot T. Spencer
Scott and Mimi Somerville
Steve Yahr and Sarah Pick Household
Susan and Steve Immelt
The Charlesmead Foundation
Todd M. Wilson and Edward Delaplaine II
Valerie and Hutch Robbins

DESIGNERS CIRCLE

American Endowment Foundation
Andrea B. Laporte
Anonymous
Barbara and Sig Shapiro
Cyndy Renoff and George Taler
Dana M. DiCarlo

David and Betsy Nelson
Dr. Matthew Freedman
E. Follin Smith
John and Laura Banes
Linda Eberhart
Mr. and Mrs. Earl Linehan,
The Linehan Family
Foundation
Mr. and Mrs. Paul Brickman
Nanny and Jack Warren,
in honor of Lynn Deering
Nils and Letieri Schnor
Scott and Julia Smith
Steve Ziger and
Jamie Snead
Sylvia and Eddie Brown
The Caplan Family
Foundation, Inc.
The Constantinides
Family Foundation
The Cordish Family
The Meier and Berlinghof
Families Fund
Thomas and Lara Kopf
Vanguard Charitable

COMPANY

Aida and James Matters
Anonymous
Bayannah Shabazz, M.D.
Ben Yannuzzi
Benno and Elayne Hurwitz
Family Foundation
Bethany Fitzgerald
Beverly and John Michel
Bill and Sue Kanter
Bruce Blum
Diane Abeloff and
Emile Bendit
Donald and Sybil Hebb
Doris S. Sweet
Dr. and Mrs. C.L. Moravec
Dr. and Mrs. Frank R. Witter
Drs. Joanna and
Harry Brandt
Earl and Annette Shawe
Family Foundation

G. Brian Comes and
Raymond Mitchener
James DeGraffenreid and
Mychelle Farmer
Jan Boyce
Jessica Strauss and
Andre Davis
John and Carolyn Boitnott
Lisa Blue
Mark and Joanne Pollak
Michael and
Phyllis Panopoulos
Michael Rosenbaum
and Amy Kiesel
Michelle Ybarra
Mr Jonathan Schwartz
Mr. and Mrs. Anirudh Rao
Nancy Savage
Neil and Linda Kirschner
Rev. Kobi Little
Robert Daniels
Sally S. and Decatur H.
Miller Private Foundation
Shirley Kaufman
Stuart and Linda Grossman
The Earle and Annette
Shawe Family Foundation
The Honorable and Mrs. E.
Stephen Derby
The Zerhouni Family
Charitable Foundation

ADVOCATES

Joseph M. and
Judy K. Langmead
Julia Timofeyeva
Kelly Joffe
Lawrie Deering and
Albert DeLoskey
Leslie and Gary Plotnick
Lindsay and Bruce Fleming
Lu Zhang and
Neville Fernandes
Maria J. Wawer
Maria Oesterreicher
Mark and Patti Gillen
Mark Horner and
Duke Stone

Martin K.P. Hill and
Janice Williams
Mary K. Carter
Mary Tod and
Calvin Timmerman
Maureen and Bob Black
Max Jordan
Melissa Martinez
Merry Alterman and
Ed Rosenfeld
Michael and
Susan Guarnieri
Michael Milligan
Michael Repka
Mike Baker
Mr. and Mrs.
A. Stanley Brager, Jr.
Mr. Dean Lynes
Mr. Wilbert Moultrie
Mrs. Marguerite
M. Villa Santa
Ms. Meggan Saulo
Natalie and Paul Burclaff
Natasha and Keenan Rice
Nellie Pena
Pamela A. Stevens
Pamela Lawrence
Paul Burk
Peter Leffman
Rachel Edds and
Elliot Lieberman
Randi Kohn
Renaissance
Charitable Foundation
Richard and Judith Katz
Richard and Lynda Davis
Richard and Margaret
Conn Himelfarb
Robert and Barbara Lagas
Robert E. and Anne L. Prince
Robert T. Sears
Roland King and
Judith Phair King
Sabrina Sikes Thornton
Sharon and
Abraham Hollander
Sharon and David Tufaro
Sharon and Joe Credit
Sharon and John Stanton
Sharonne and
Jason Bonardi

Shoshana Ballew &
Aaron Tripp
Stephen and Edie Winegrad
Sue Lin Chong
Szilagyi Family Foundation
Teresa Bay & Tom Gorak
The A. C. and Penney
Hubbard Foundation
The Ethel M. Loomam
Foundation, Inc.
The Jim and Anne Cantler
Memorial Fund
Thrivent
Tom and Barbara Guarnieri
Tracey L. Chunn
Tracy Miller and Paul Arnest,
in honor of Stephanie Miller
William and Paula Phillips
Zoey Zuo

PATRONS

Aaron Burstein
AC and Kathryn George
Alane and George Kimes
Alison and Arnold Richman
Andy Niazy and
Summer Hughes
Angel Preston
Angelo and Donna Guarino
Ann Clary Gordon
Anonymous
Arlene Falke
Becky Thomson
Ben and Emarie Payne
Betsy and George Hess
Betty and Stephen Cooper
Brad and Crickett Woloson
Bruce and Toni Berger
Carol and Will Cooke
Carol Lynne Burek
and Julian Smith
Claire D. O'Neill
Community Foundation of
Howard County
David and Bonnie Allan
David and Cecelia Beck
David and Harriet Hutzler

David and Suzanne Cane
Deborah King-Young
and Daniel Young
Donald M. and
Dorothy W. Gundlach
Donald M. and
Margaret W. Engvall
Dorothy L. and
Henry A. Rosenberg, Jr.
Dr. and Mrs. Arthur Burnett II
Dr. and Mrs.
Kenneth B. Lewis
Dr. Carl Shanholtz and
Dr. Ruth Horowitz
Dr. Cynthia Sears
Dr. Emma J. Stokes
Dr. Frank C. Marino
Foundation
Dr. Frank Eisenberg and
Hon. Catherine Blake
Drs. Harold and Robin Tucker
Eddy and Suzy Dunn
Eleanor Frias and Samuel
Robfogel, in honor of
Katherine and Scott Bis
Frances Warner
Freddi Lipstein
and Scott Berg
Gail Schulhoff
Gary Felser and
Debra Brown Felser
George and
Beth Murnaghan
Gregory P. Comstock
Gwen Davidson
Handa Family
Charitable Fund
Hannah Katz
Helen Montag and
Adam Schulman
Hon. Evelyn Cannon and
James Casey
Jack and Ida Roadhouse
James Mazarella
James Smith
Jan Caughlan
Janice and Robert Davis

Jeanne E. Marsh
Jessica and Glen Schatz
Jill Levin
Jim and Linda Loesch
Joan A. Dunn
Joan E. Pugh
John and Sarah Robinson
John Paquette
John Wessner

CORPORATIONS

SEASON SPONSOR



An Exelon Company

PRODUCERS CIRCLE



EXECUTIVES CIRCLE



PLAYWRIGHTS CIRCLE

Brown Capital Management, Inc.
BTST Services
Companions and Animals for Reform and Equity
Ironshore Contracting, LLC
KPMG LLP
McGuireWoods LLP
NAACP of Baltimore City
PNC Greater Maryland
Saul Ewing Arnstein & Lehr LLP
Whiting-Turner Contracting Co.

DIRECTORS CIRCLE

CohnReznick
DF Dent and Company, Inc.
Merrill

DESIGNERS CIRCLE

Eagle Coffee Company, Inc.
Murphy Enterprise
Quinn Evans Architects
State Employees Credit Union

GOVERNMENT GRANTS

SEASON SPONSORS

Maryland State Arts Council
(msac.org)
Baltimore County Government
Maryland Department of Housing and
Community Development
National Endowment for the Arts
US Small Business Administration

LSA SPONSOR

Maryland State
Department of Education

MATCHING GIFT COMPANIES

Baltimore Civic Fund
BGE
Brown Capital Management, Inc.
The Annie E. Casey Foundation
JMI Equity
McCormick & Co. Inc.
New Enterprise Associates
PayPal Giving Fund
PNC Greater Maryland
T. Rowe Price Group, Inc.

STAFF

EXECUTIVE OFFICE

ARTISTIC DIRECTOR
Stevie Walker-Webb

MANAGING DIRECTOR
Adam Frank

PRODUCING
CONSULTANT
Ken-Matt Martin

CREATIVE STRATEGIST
Avon Haughton

EXECUTIVE ASSISTANT
Hope Hynson

YALE MFA FELLOW
Adrian Hernandez

ARTISTIC PRODUCING

DIRECTOR OF
ARTISTIC PRODUCING
Sarah Ashley Cain

ASSOCIATE
LINE PRODUCER
Bridgette C. Burton

ASSOCIATE
LINE PRODUCER
Jeff Kirkman III

COMPANY MANAGER
Kelleigh Pangratz

ARTISTIC PARTNERSHIPS & INNOVATION

DIRECTOR OF
ARTISTIC PARTNERSHIPS
& INNOVATION
Annalisa Dias

NEW WORKS &
CIVIC PROGRAMS
MANAGER
estrellita beatriz

INTERIM RENTALS &
SHARED SPACE
INITIATIVE MANAGER
Missy Smith

ARTISTIC
CAUCUS ASSISTANT
Casey Lucero

LEARNING & SOCIAL ACCOUNTABILITY

DIRECTOR OF
LEARNING & SOCIAL
ACCOUNTABILITY
Janal Daniel

LSA PROGRAMS
MANAGER
Emily Lettau

PROGRAM PLANNING & OPERATIONS

PROGRAM OPERATIONS
COORDINATOR
/COVID SAFETY
MANAGER
Eric Burton

DEVELOPMENT

DIRECTOR OF
DEVELOPMENT
Gen Haines

ASSOCIATE DIRECTOR
OF DEVELOPMENT
Nicole Ringel

DEVELOPMENT
ASSISTANT
Alonzo Perez

INSTITUTIONAL GIVING
COORDINATOR
Hailie C. Miles

SPECIAL EVENTS
COORDINATOR
Chania Hudson

STRATEGIC
DEVELOPMENT
CONSULTANT
Megan Callaghan

FINANCE

LEAD FINANCIAL
OFFICER (CFO)
Christopher Marshall

DIRECTOR OF FINANCE
Janessa Schuster

FINANCE & HR
ASSOCIATE
Meg Williams

INFORMATION TECHNOLOGIES

DIRECTOR OF
INFORMATION
TECHNOLOGIES
John Paquette

MARKETING & COMMUNICATIONS

DIRECTOR OF
MARKETING &
COMMUNICATIONS
Tyrone Manning

ASSOCIATE DIRECTOR
OF MARKETING &
COMMUNICATIONS
Bo Frazier

PUBLICIST
Bryan Buttler

COMMUNICATIONS
MANAGER
Jasir Qiydaar

GRAPHIC DESIGNER
Theresa Lammon

TIKTOK AMBASSADOR
O'Malley Steuermaier

MARKETING
APPRENTICE
Kirone Anderson

AUDIENCE EXPERIENCE

ASSOCIATE DIRECTOR OF AUDIENCE EXPERIENCE

Dana Hurd

DOCENT COORDINATOR

Pat Yevics

HOUSE MANAGERS

**Candace Jones,
Gray Hemphill,
Liv Levine,
Kelleigh Pangratz,
Griffin DeLisle,
Sarah Young**

CONCESSIONS

**Val Long,
Anna Lorenzen,
Asia Maxton,
Azania Maxton-Gethers**

BOX OFFICE

MEMBERSHIPS MANAGER

Jerrilyn Keene

TICKET SERVICES MANAGER

Kevin Ricker

ASSISTANT BOX OFFICE MANAGER

Bird Pope

PATRON SERVICES

ASSOCIATES
**David Kanter,
Libbey Kim,
Stephanie Mendoza,
Shaquan Pearson,
Rowyn Peel,
Natalie Dent**

FACILITIES

FACILITIES SUPERVISOR

Patrick Frate

FACILITIES ASSOCIATE

Trevor Winter

OPERATIONS

ASSISTANT

James Turner

PRODUCTION

DIRECTOR OF PRODUCTION

Jeffery Bazemore

ASSOCIATE PRODUCTION MANAGER

Sammy Brown

AUDIO

INTERIM AUDIO DIRECTOR

Eric Denson

AUDIO ENGINEER

Simon Briggs

AUDIO TECHNICIAN

Jovan Sosa

COSTUMES

COSTUME DIRECTOR

Frederick Deeben

ASSISTANT COSTUME DIRECTOR/DRAPER

Kehler Welland

CRAFTSPERSON

William E. Crowther

ELECTRICS

LIGHTING DIRECTOR

Samantha Brewer

LEAD ELECTRICIAN

Jessica Anderson

ASSISTANT LEAD ELECTRICIAN

Michael Logue

STAFF ELECTRICIAN

Steven Burrall

PROPERTIES

PROPERTIES DIRECTOR

Rachael Erichsen

ASSISTANT PROPERTIES MANAGER

Jessie Combest

LEAD CRAFTSMAN

Nate Scheifele

SCENERY

TECHNICAL DIRECTOR

James Cartee

INTERIM TECHNICAL DIRECTOR/ASSISTANT TECHNICAL DIRECTOR

Juliet Schick

SCENE SHOP SUPERVISOR

Bex Vega

LEAD CARPENTER

Brian Jamal Marshall

SCENIC CARPENTER

**Aniya Robinson,
Elijah Miller**

SCENIC AND PROPS APPRENTICE

Victor Brown

DECK CARPENTER

Heather Hernandez

SCENIC ART

CHARGE SCENIC ARTIST

Erich Starke

OVERHIRE SCENIC ARTIST

Mallory Porter

STAGE OPERATIONS

WARDROBE HEAD

Linda Cavell

3 PLAYS FOR JUST \$70!!

MEXODUS

WRITTEN AND PERFORMED BY
BRIAN QUIJADA AND
NYGEL D. ROBINSON
DIRECTED BY DAVID MENDIZÁBAL
A WORLD PREMIERE
CO-PRODUCTION WITH
MOOSAIC THEATER COMPANY
MAR 14 - APR 7, 2024

THE HOT KING

BY KATORI HALL
DIRECTED BY
CHRISTOPHER D. BETTS



IN ASSOCIATION WITH
HARTFORD STAGE

APR 11 - APR 28, 2024

the Importance of Being Earnest

BY OSCAR WILDE
ADAPTED AND DIRECTED BY JENNY KOONS
WORLD PREMIERE ADAPTATION
IN PARTNERSHIP WITH
PITTSBURGH PUBLIC THEATER
MAY 9 - MAY 26, 2024

BALTIMORE
CENTER
STAGE

VISIT OUR BOX OFFICE AFTER THE SHOW FOR MORE DETAILS

POWER THE NEXT GENERATION OF THEATER MAKING AT
BALTIMORE CENTER STAGE



We envision Baltimore Center Stage as a producer of the most compelling productions and stories of our time, as an institution in service to our city and state by providing transformative arts experiences for youth, and as a hub of creative exchange for our city's visionary artists, leaders, and community members. Thank you for making this vision possible.



Consider supporting Baltimore Center Stage by making a tax-deductible donation today.

Visit centerstage.org/donate or scan the QR code.