

40TH ANNUAL CELEBRATION

YOUNG PLAYWRIGHTS FESTIVAL

MAY 10

I LOVE MY CITY,
I LOVE MYSELF



BALTIMORE
CENTER
STAGE

40TH ANNIVERSARY YPF HONOREES
EDDIE C. and C. SYLVIA BROWN

LAND ACKNOWLEDGEMENT

Honor Native Land

Responding to a call from our Indigenous colleagues, collaborators, and neighbors, Baltimore Center Stage is working toward building meaningful and accountable relationships with the land we occupy. As a first step on this path, you'll see a land acknowledgement in each of our programs. Acknowledgement is itself a small gesture, and we look forward to continuing our efforts toward decolonization in a meaningful way. If you're interested in more information feel free to visit the US Department of Arts and Culture's "Honor Native Land" guide.

Baltimore Center Stage acknowledges that the land beneath us, this place, this community, owes its vitality to generations who have come before. Some were brought forcibly to this land, some came here in search of ownership or simply a better life, and some have lived and stewarded this land for countless generations. In a spirit of making erased histories visible, we acknowledge that we are standing on the ancestral and occupied lands of the Piscataway peoples. The Susquehannock, Lenape, and Lumbee peoples have also cared for this land. These peoples are not relics of the past. They continue to steward this land today with care, vitality, and tradition. Their relations are numerous throughout Turtle Island, and they continue to grow. We pay respects to their elders: past, present, and future. Please take a moment to consider the many legacies of violence, displacement, migration, and settlement that bring us together here today. And please join us in uncovering such truths at any and all public events.

Additionally, in the spirit of reconciliation, you can honor the Indigenous peoples of this land by donating to Native American Lifelines, donating to or visiting the Baltimore American Indian Center & Heritage Museum, and supporting local Indigenous artists. These are only a few suggestions of the many ways we can move towards reconciliation.



BALTIMORE AMERICAN
INDIAN CENTER

THE INDIGENOUS ART GALLERY

Free to the public,
open during regular
BCS box office hours,
Tue - Fri 12PM to 5PM



This program is published by:

BALTIMORE CENTER STAGE

700 North Calvert Street
Baltimore, MD 21202

BOX OFFICE
410.332.0033

ADMINISTRATION
410.986.4000

CENTERSTAGE.ORG
INFO@CENTERSTAGE.ORG
EDUCATION@CENTERSTAGE.ORG

COVER ART BY

Rachel Glen, Illustration Student,
Sophomore, M.I.C.A.

FOLLOW US ON SOCIAL MEDIA

Get updates about our community
programming, upcoming events,
productions, and behind-the-scenes
content.



fb.com/bmorecenterstage
@bmorecenterstage

CONTENTS

- 2 WELCOME FROM BCS
- 3 THE PLAYS, PLAYWRIGHTS,
CAST AND CREATIVE TEAM
- 4 YPF HONOREES
A NOTE FROM THE
EDUCATION DEPT.
- 5 DIRECTORS' NOTES
- 6 BIOS: BEHIND THE PAGE
- 13 SPECIAL THANKS
- 17 THE NEXT ACT
CAMPAIGN DONORS
- 20 ABOUT BCS
- 21 BCS STAFF

ACKNOWLEDGEMENTS



Please consider making a tax-deductible donation now by
scanning the QR Code or visit centerstage.org/donate

MAJOR FUNDING PROVIDED BY:



CELEBRATING
50 YEARS OF SERVICE
TO THE ARTS

THE
SHUBERT
FOUNDATION INC



THE CITIZENS OF
BALTIMORE COUNTY

Welcome to a landmark celebration!

We are deeply proud to welcome you to the **40th Anniversary presentation of the Baltimore Center Stage Young Playwrights Festival (YPF)**. It is an incredible honor to mark four decades of this vital program – the oldest continuous program of its kind in the entire nation – and to celebrate the enduring power of young voices shaping the future right here in Maryland.

So, what is the Young Playwrights Festival, and what magic are you about to witness? Each year, students from across Maryland are invited to write original short plays and submit them for consideration. Baltimore Center Stage teaching artists work in residence with classroom teachers, guiding young people through the core elements of dramatic writing – from crafting compelling characters to building dynamic conflict. From the many submissions received, six winning plays are selected. Tonight, you will see those winning works brought to vivid life by professional actors and directors, right here on the stage of the State Theater of Maryland. We simply can't wait to share their incredible creativity and unique perspectives with you. Our profound thanks to the playwrights, incredible program leaders Erin Pettigrew and Hope Hyson, and to the parents and teachers whose unwavering support makes it possible for these amazing young artists to shine!

This milestone would not be possible without the dedication of countless individuals over the past forty years. We extend our deepest gratitude to the passionate teaching artists who have mentored generations of writers, the visionary arts education leaders who championed this work, the dedicated parents and classroom teachers who fostered creativity day in and day out, and most importantly, the thousands of student writers who bravely shared their stories. Your collective efforts have not only enriched this festival but have inspired our community, with many participants going on to incredible careers as artists, innovators, and leaders who continue to shape Baltimore and beyond.

As we celebrate many years of inspiration and excellence, we also want to offer an extraordinary thank you to **Eddie C. and C. Sylvia Brown**. Their consistent, generous support of arts education at Baltimore Center Stage over many years has been instrumental in making programs like the Young Playwrights Festival thrive. Visionary leaders like the Browns, from across the Baltimore community, create the essential opportunities that solidify this city's reputation as one of the most exciting and vibrant creative hubs in the nation.

Thank you again for joining us at Baltimore Center Stage for this special occasion. If you are inspired by what you see tonight and want to support our ongoing work with young artists, you can make a real impact by contributing to the **BCS Next Act Campaign**. Your donation powers a new generation of impact in our community, ensuring programs like YPF continue to flourish. It's easy! **Make a donation online at bit.ly/nextactbcs.**

Thank you for being part of this milestone celebration. Prepare to be moved, amazed, and inspired by the next generation of theatrical voices.

Enjoy the festival!

Sincerely,



Stevie Walker-Webb

ARTISTIC DIRECTOR, BALTIMORE CENTER STAGE



Adam Frank

MANAGING DIRECTOR, BALTIMORE CENTER STAGE



40TH ANNUAL CELEBRATION

YOUNG PLAYWRIGHTS FESTIVAL



THE PLAYS

I LOVE MY CITY, I LOVE MYSELF

BeMORE

By Aamir Snead
Director: Susan Stroupe

BMore Yourself

By Alice K. Reid
Director: Susan Stroupe

The Sleepover

By AV Smith
Director: Raecine Singletary

Flash Finds Herself

By Dylan Barron, Kayden
Onyewu, & Garrett King
Director: Susan Stroupe

Baltimore:

As It Was, So It Is

By Quinn Guilfoyle
Director: Raecine Singletary

Monsters Anonymous

By Maddy Hahn &
Nalani Simpson
Director: Raecine Singletary

ON & AROUND THE STAGE

CAST & CREATIVE TEAM

Avon Houghton DRAMATURG/MENTOR

Allison Brown
Zipporah Brown Gladden
Carolyn Buck
Susan Moon
Tarshai' Peterson
Arlen Hancock
TEACHING ARTISTS

Susan Stroupe
TEACHING ARTIST/
DIRECTOR

Raecine Singletary
DIRECTOR

Wil Crowther
COSTUME DESIGNER

Martin Sundiata
SOUND DESIGNER

Jessica Anderson
Kim Parson

LIGHTING DESIGNERS

Leyen Douthard
AUDIO ENGINEER

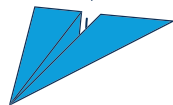
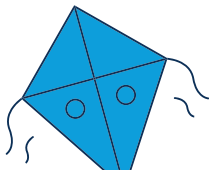
Khalil White
DECK CARPENTER/
PRODUCTION
ASSISTANT

Peri Walker
estrellita beatriz
STAGE MANAGERS

Maya Camille
ASSISTANT
STAGE MANAGER

Jessie Combest
PROPERTIES DESIGNER

Jade Jones
JC Payne
Shaquan Pearson
O'Malley Steuerman
Ashley Sigmon
Sarah Lynn Taylor
ACTORS



HONOREES



40TH ANNIVERSARY YPF HONOREES **EDDIE C. AND C. SYLVIA BROWN**

Honoring Eddie C. and C. Sylvia Brown for their lifelong commitment to supporting life changing educational programs and the theatrical experience. We can't think of a better way to mark the occasion and power another generation of deep impact for the future.

A NOTE FROM THE BCS EDUCATION DEPT.

Hello and Welcome to the **40th anniversary celebration of Baltimore Center Stage's Young Playwrights Festival!** On behalf of the Education Department here at BCS, we would like to thank you all for your attendance, engagement, and support of the wonderful original work created by today's winning playwrights.

As we reflect on the 40-year history of this program and our theater's involvement in arts education in our city and state, we can't help but be amazed by all the incredible people who have impacted YPF throughout the years. This year, we've had new and returning Teaching Artists, directors, playwrights, and creative team members, some of whom have reflected on past YPF experiences fondly with love and joy. Their involvement has brought so much positive energy to the process.

As we began planning for this year's in-school residencies and full festival celebration, it was top priority for us to take the time to be intentional in honoring the deep roots of creative energy and brilliance springing right out of the streets of Baltimore and the communities throughout the state of Maryland. Our theme this year - **"I Love My City, I Love Myself"** - inspired so many thought-provoking, comedic, poignant, and community-centered artworks and stories. It has been a pleasure to read the many expressions of love and hope for this great city and state through the perspective of our youth.

We sincerely thank our community of readers for helping us sort through the mountains of creative genius we received this year, and we are so proud to present this year's six winning plays and the extraordinary playwrights. We hope that today's productions bring you the same joy, pride, and inspiration that it has brought us. If you enjoy what you see today (or any of our performances!), please consider making a tax-deductible donation to us by visiting us at centerstage.org/donate.

DIRECTORS' NOTES

YPF continues to be one of my favorite theatre experiences, and I'm thrilled to return for another year. The work that BCS is doing to spotlight the talent of our next generation of theatre makers is not only inspiring, it's necessary. And let me tell you, the future is bright! At a time when we are yearning for true connection, these plays remind us that community is essential to lasting healing and joy. My hope is that this year's playwrights walk away proud of the art they've created, and that their voices inspire others to keep writing, keep creating, and keep going. To our audience, I hope these stories invite you to see your city with fresh eyes. Maybe even pause, look around, and get to know your neighbor a little more. May these plays spark conversation, curiosity, and community in the most unexpected ways, among your families, your friends, and your neighborhoods. It is a gift to witness the minds of today's youth as they reflect on the world around them. Let's take this time to truly listen, learn, and connect. Congratulations to all of the finalists and to everyone who helped make tonight so magical!

RAECINE SINGLETARY, Young Playwrights Festival Director

Young Playwrights Festival is always my favorite night of theater of the year! Whether working on it as a director or teaching artist, I'm always inspired by the amazing minds of the students who write and submit plays to this great program. What strikes me every year is the deep themes that these young writers want to engage with: in the winning plays this year are explorations of identity, self-actualization, the complexities of friendship, oppression, and the importance of community for survival...and all these stories are told with the mixture of sincerity, absurdity, and imagination that young writers understand is vital for live theater. Working on YPF always inspires me in the rest of my theatrical work, and I hope everyone takes inspiration from these brilliant, challenging, and beautiful stories. Thank you to all the students who wrote plays this year, and to everyone who helped make this night of great theater possible: teachers, families, and everyone at Baltimore Center Stage. Enjoy!

SUSAN STROUPE, Young Playwrights Festival Director

BEHIND THE PAGE



AAMIR SNEAD
Playwright, *BeMORE*
Watershed Public
Charter, 6th Grade
Aamir Snead is a
singer; writer and all

around creative. Aamir entered the young playwright's festival this year hopeful to fuse his love of musical theatre with his new found appreciation of his hometown and an awareness of the importance of Community. Aamir is a 6th grade student at Watershed Public Charter School where his artistry and self-expression have been supported and encouraged by his teachers and friends. Hoping to join the ranks of many great creatives before him, Aamir is greatly looking forward to sharing his voice and creativity with the world, starting right here at Baltimore Center Stage.



DYLAN BARRON
Playwright, *Flash Finds Herself*
Baltimore Lab School,
4th /5th Grade
My name is Dylan

Barron. I am 10 years old. I go to Baltimore Lab school. I am in the fourth grade. This is my first time doing the Young Playwrights Festival. My special interest is that I like Dungeons and Dragons. I am really excited to watch the play be performed.



KAYDEN ONYEWU
Playwright, *Flash Finds Herself*
Baltimore Lab School,
4th /5th Grade
My name is Kayden
Onyewu. I am 12 years

old. I go to Baltimore Lab School. I'm in 5th grade. It was my first time writing a play, and I liked making up characters. In my free time, I like to code. I also like to play Roblox. I can't wait to see the play performed at Baltimore Center Stage.



GARRETT KING
Playwright, *Flash Finds Herself*
Baltimore Lab
School, 4th /5th
Grade

My name is Garrett King. I am 10 years old. I am a student in Team 204 at the Baltimore Lab School. I am in 4th grade. It is my second time in the YPF contest and my first time as a finalist. I like to play video games, and I like to sing. I am happy to see our play.



ALICE K. REID
Playwright, *Bmore Yourself*
Mt. Royal
Elementary/Middle
School, 7th Grade

Alice Reid was born in Baltimore and is a 7th grader at Mount Royal Elementary/Middle School. She lives in two houses with two cats and a dog (an Italian Greyhound and Chihuahua mix) and is the middle child of many siblings. Much of her free time is devoted to music - whether it's playing the harp, piano, clarinet or singing. She also spends time playing softball and swimming. Alice has a deep appreciation for animals, she finds all of them to be their own amazing creatures, from furry little kittens to scaly snakes. Having grown up with a family full of stories and excitement, especially during big family dinners, she has always enjoyed writing music and writing stories. She thanks her English teacher, Mr. Regal, for encouraging her to write her first play and to Baltimore Center Stage for producing it as part of the YPF.



QUINN GUILFOYLE
Playwright,
Baltimore: As It Was, So It Is
The Community
School, 10th Grade

Quinn Guilfoyle is a 10th grader at The Community School in Baltimore,

BEHIND THE PAGE

MD. She enjoys her work as the school Photographer in addition to her countless other hobbies including creating original artwork. Quinn discovered a love for writing while engaged in her Creative Writing classes at school. Her mentors Mr. Don Risett and Mr. Tom Culotta encouraged Quinn's exploration in the writing arts. She focuses on short stories and poetry, but has found writing for the stage to be an exciting new way to express her artistic voice. Quinn has a passion for social issues and wants to use art to express her ideas and stand up for her beliefs. She is interested in the environment and science and looks forward to studying marine biology and issues surrounding the preservation of ecosystems. Quinn hopes to continue her journey writing for the stage and telling more of her stories in thoughtful and meaningful ways. Thank you to Center Stage for providing young visionaries the opportunity to share their passions.



AVESON (AV) SMITH
Playwright, *The Sleepover*
Dulaney High, 12th Grade

AV is a senior at Dulaney High School and a member of the school's literary arts magazine and creative writing class *Sequel*. She is heavily involved in art classes and extracurriculars at school, as well theater tech where she's predominantly worked with costumes and props. This is her first experience with the genre of playwriting and she's very excited to see her written creation come to life with the amazingly talented and dedicated cast and crew. AV would like to thank her wonderful creative writing advisor Mrs. Hopkins and the entire Baltimore Center Stage company.



MADDY HAHN
Playwright, *Monsters Anonymous*
Dulaney High,
11th Grade

Maddy Hahn is a junior at Dulaney High School, where she contributes to *Sequel*, the school's literary arts magazine, and explores her voice through creative writing. Outside the classroom, Maddy stays busy with a wide range of interests - from visual arts to playing softball - balancing creativity with teamwork. *Monsters Anonymous* is her first play, and the process of writing it has been a new and exciting creative challenge. She's thrilled to see her words take shape on stage and is grateful to her teacher, Mrs. Hopkins, for encouraging her to take the leap into playwriting. She also thanks Baltimore Center Stage for giving young writers the space to be bold and imaginative.



NALANI SIMPSON
Playwright, *Monsters Anonymous*
Dulaney High, 12th Grade

Nalani Simpson is a 12th grader at Dulaney High School and a member of *Sequel*, the school's literary art. Nalani challenges themselves with multiple forms of art- video editing, script writing, and prose-making being among them. They have lived up and down the east coast, but have been settled just outside Baltimore for five years. Nalani would like to thank Mrs. Hopkins, *Sequel's* advisor and the company, Baltimore Center Stage, for this opportunity.



JADE JONES
Actor

Jade Jones is a professional actor with extensive experience in both theatre and film. A graduate of Morgan State University, Jade has honed

BEHIND THE PAGE

their craft through rigorous academic training and practical application. Furthering their education, they studied theatre abroad in Ireland, enriching their perspective and technique. With a warm and approachable demeanor, Jade Jones continues to captivate audiences with her art.



JC PAYNE

Actor

JC Payne is a professional magician and educator who works with the School of Magic Arts. He holds a BFA in Acting from the University of Maryland, Baltimore County, and an Associate's in Theatre from Howard County Community College. Local to the DMV, some of his career highlights so far include performing in two productions with the Hip-Hop Shakespeare collective, *Julius Caesar*, and *Much Ado About Nothing* (Fools and Madmen). Other favorite credits include *The Seagull* (Gamut Theatre), *An Unbuilt Life* (Washington Stage Guild), and *In the Cotton* (Farm Theatre Project).



SHAQUAN PEARSON

Actor

Shaquan Pearson is an actor based in Baltimore, MD. His regional credits include *Macbeth*, *A Christmas Carol*, *Much Ado About Nothing*, and *Romeo & Juliet* (Chesapeake Shakespeare Company). Local credits: *The Scottsboro Boys* (ArtsCentric), *Frankenstein* (The Strand Theater Company), and *We Broke Up* (Single Carrot Theater). He received his BFA from University of Maryland, Baltimore County (UMBC) and AA in Theatre Performance from Montgomery College.



O'MALLEY STEUERMAN

Actor

O'Malley Steuerman is so excited to be back at BCS for the Young Playwright's Festival! O'Malley graduated from Towson University with their BFA in Acting in May of 2020 and have since solo-traveled the U.S. to complete their research-based performance project entitled, "so, what are you gonna do next?." Upon returning home to Baltimore they've appeared in productions across the DMV: *Romeo + Juliet* (The Folger), *Quilters* (1st Stage), *R/J* (Strand Theater Company), *Life is a Dream*, *Tiny Beautiful Things* and *Our Town* (Baltimore Center Stage). They made their producing debut in 2023 with *R/J* at the Strand Theater Company and this July they will be co-producing Baltimore's first Trans Theater Festival, #T4T4T, in residence at the Voxel. IG: @omalleysteuerman



SARAH LYNN TAYLOR

Actor

Sarah Lynn Taylor is an actor, voiceover artist, director, and teacher. Her recent credits include *Dutchman* at Arena Players, Rapid Lemon Productions' *Variations on Courage*, as well as *Connie in Lily, Arthur* by Steven J. Satta with Baltimore Playwrights Festival. Sarah Lynn just returned from participation in an international experimental theatre workshop *The Rhythmic Body* in Rome with Improcomp. She has appeared with Arena Players as Carolyn Bryant in *The Face of Emmett Till* and *Bev/Kathy* in Clybourne Park. A founding artistic associate of Iron Crow Theatre Company, Sarah Lynn appeared as Kathy in *The Revelation of Bobby Pritchard*, Yitzhak in *Hedwig and the Angry Inch*, and herself in an original

BEHIND THE PAGE

one-woman production, *I Want To Be A Gay Icon!*. She has the privilege to direct and teach some of the best young artists in the world at Wilde Lake Middle School.



ASHLEY SIGMON

Actor

Ashley Sigmon is a home-grown Baltimore County actor. She is delighted to be a

part of the Youth Playwrights Festival and give life to the characters created by the young talent within Maryland. In past productions Ashley immersed herself into her roles; Madame DeLacey from *Frankenstein* and Agnes from *She Kills Monsters*. In addition to theater, Ashley has also brought her talents to film; *Our Farm* by Dishwasher Safe Media, and *Dry Bones* by Charm City Filmmakers Dee Wilson. In the winter of 2021, Ashley first started to work on her theatrical skills with Dawn Thomas Reidy. Special thanks to Ashley's friends, family, fellow actors, and mentors who have consistently supported every artistic endeavor.



RAECINE SINGLETARY

Director

Raecine Singletary is a Jamaican American director,

photographer, creative, and Baltimore native. She works to cultivate art that centers, celebrates, and uplifts the revolutionary joy that continues to shine specifically through Black women and youth; igniting an upswell of healing through unrelenting joy. She has worked as a director with Mercury Store, Broadway Advocacy Coalition, Playwrights Horizons New Works Lab, Baltimore Center Stage, Pittsburgh Classic Theatre, Lime Arts Productions, The Hansberry Project, City Theatre, and Point Park University. She has collaborated as an assistant director alongside Rebecca Martinez

(*BITE ME*), Dustin Wills (*WET BRAIN*), Jenny Koons (*REGRETFULLY, SO THE BIRDS ARE*), Pam MacKinnon (*DOWNSTATE*), Nicole Brewer (*FIRES IN THE MIRROR*), Awoye Timpo, Will Davis (*THE SWINDLERS*), Whitney White, Justin Emeka (*AMERICAN SON*), Marya Sea Kaminski (*A FEW GOOD MEN, LITTLE SHOP OF HORRORS, MARJORIE PRIME*), and Shariffa Ali (*SCHOOL GIRLS; OR, THE AFRICAN MEAN GIRLS PLAY*). Raecine holds a B.A. in Theatre Arts with a concentration in Directing and a minor in Photography from Point Park University. 444



SUSAN STROUPE

Director

Susan Stroupe (she/her) is a Baltimore-based collaborative director

and theater maker who specializes in new, immersive, and devised works. Susan has worked in the Twin Cities, LA, NYC, Albuquerque, Baltimore and her hometown Atlanta as a director, performer, writer, puppeteer, dramaturg, and deviser in professional and community-based professional companies, collaborating with artists and nonartists of many ages, disciplines, identities, and abilities. In Baltimore, Susan has worked as a freelance director for many companies, and is a founding member and Core Creator for Submersive Productions. She works with the Center For International Theatre Development (CITD), and is a long-time teaching and guest artist for Baltimore Center Stage, Everyman Theatre, and the University of Maryland Baltimore County (UMBC). She is a proud Associate Member of the Stage Directors and Choreographers Society. This is Susan's third time directing for Young Playwrights' Festival, and it's always a highlight of the year! Congrats to all the brilliant winners and participants of YPF for creating some amazing work!

BEHIND THE PAGE

PERI WALKER

Stage Manager

Peri Walker is a Baltimore-based stage manager and theatre artist delighted to be working on her first project with Baltimore Center Stage. She has served as the assistant stage manager for *Crumbs from the Table of Joy* and *Primary Trust* at Everyman Theatre, and stage managed productions with Baltimore Shakespeare Factory, Dance & Bmore, Vagabond Players, and Rapid Lemon Productions.

ESTRELLITA BEATRIZ

Stage Manager

At 30, estrellita beatriz has facilitated over 300 theatrical productions, live events, and ceremonies with humans of all generations. starr identifies artistically as a full-spectrum artist, acompañamiento (doula), facilitator, and ritual worker in constant transition. Their select stage management credits include AfroHouse's *Cloud Nebula*, Blue Barn Theatre's *For Black Trans Girls*, and Actor's Theatre of Louisville's *The Wolves*.

MAYA CAMILLE

Assistant Stage Manager

Maya Camille is a multi-disciplinary artist, talent manager, creative entrepreneur and arts educator from East Baltimore. Ms. Camille believes art is the only way to change the world around her. By speaking truth to power with love, enriching artists' lives and careers, Maya creates the world she seeks by helping artists build and maintain sustainable careers, forecasting for artists' futures, finding the right opportunities, and encouraging artists to take risks. Maya Camille builds intentional communities with creatives, scholars and the black sheeps of the world to create the life she dreamt of as a young girl. Curating festivals, coordinating youth programming, creating spaces where creatives thrive. Maya has a deep rooted belief that Artists deserve to

live a thriving, sustainable, luxurious life while creating art and she is committed to making that a reality for herself and her community. You can follow Maya Camille @phonibraxton_everywhere. — I look forward to chatting with you about all things art, sustainable living, creating, community building & artist development.

KIM PARSON

Co-Lighting Designer

Kim Parson is joining the BCS team as this year's Electrician Apprentice. Kim Parson is super excited to be Co-Designing her first production here at Baltimore Center Stage! She recently graduated from McDaniel College (BA Theatre Arts) and was one of the 2024 Kennedy Center Finalists for the Barbizon Award for Excellence in Lighting Design from Region 2. She'd like to thank her awesome electrics team Sam, Jess, Michael, and Jeff Bazemore for his continuous support!

MARTIN SUNDIATA

Sound Designer

Martin Sundiata is a Baltimore-based theatrical designer and technician. Some of his credits include: *For Black Boys...*, *For Colored Girls...*, *Antigone* (Theatre Morgan), *The Mountaintop* (Black Spectrum Theatre co. & Vagabond Players), *Romeo and Juliet* (Chesapeake Shakespeare Company). He is also a playwright and directed his original work *Dream and Disconnect* at the Turpin-Lamb Theatre in April 2022. You can find more of his work at MartinSundiata.com

WIL E. CROWTHER

Costume Designer

Credits include, *Iago's Plot* for The National Theatre of Weimar; *Hammers with The Independent Eye*, *Born Yesterday* and *The Cemetery Club* for The Maryland Arts Festival; *Sunset Boulevard*, *Disaster! the Musical* and *The Unexpected Guest* for Cockpit in Court; *Yours Forever*, *Lincoln* with Quarry

BEHIND THE PAGE

Theatre; *The Wild Party* for Teatro 101; *A Dickens of a Tale*, *The Tempest* and *A Midsummer Night's Dream* with Baltimore Shakespeare Festival; *The Winter's Tale*, *The Light in the Piazza*, *Mrs. Warren's Profession* and *Candide* with Theatre Hopkins; *Angels in America*, *Three Days of Rain*, and *Interrogating the Nude* for Axis Theatre; *The Fan* and *Marco Polo Sings a Solo* with The Bowman Ensemble; *Cinderella*, *How To Become a Pirate*, *Pinocchio*, *Rapunzel*, *A Year With Frog and Toad* and *Mary Poppins* for Pumpkin Theatre; and multiple years of The Young Playwrights Festival at Baltimore Center Stage. Stevenson University credits include: *The Little Shop of Horrors*, *The Laramie Project*, *Medea*, *The Nether*, *Dracula*, *Sweeney Todd*, *The Three Penny Opera*,

The Yellow Wallpaper and *The Trojan Women*. Guest artist for Towson University credits include: *Hair*, *Miss Julie*, *The Diary of Anne Frank* and *The Crucible*. Costume Design for Film: *Invisible Cities*, *It Goes Without Saying*, *Flight*, *Thrown*, and *Unravelling* which was accepted into The Ethnografilm Festival for 2024 (Director: John Bright Mann) and *The Connection* (Director: Steve Yeager). Costume craftwork for Broadway: *Little Women*, *Dracula, the Musical*, *Cry Baby*, *How to Succeed in Business Without Really Trying* and *Born Yesterday* (Designer: Catherine Zuber). Regional craftwork: Baltimore Center Stage 1996- Present



The scenic, costume, lighting and sound designers in LORT Theatres are represented by United Scenic Artists, Local USA-829 of the IATSE.



Baltimore Center Stage operates under an agreement between the League of Resident Theatres and Actors' Equity Association, the Union of Professional Actors and Stage Managers in the United States.



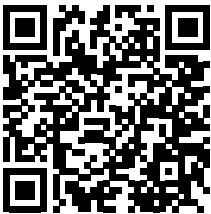
The Director and/or Choreographer is a member of the Society of Stage Directors and Choreographers, Inc., an independent national labor union.

CAMP BCS 2025



Illustration by Rachel Glen

At Camp BCS, students will practice artistic skill building through theatre games and exercises, writing, visual arts, movement with music and STEAM workshops.



SESSION 1: JULY 7 - JULY 18
SESSION 2: JULY 21 - AUG 1

CAMP COST: \$750

scholarship opportunities are available

SIGN UP: [CENTERSTAGE.ORG/EDUCATION/CAMP_BCS](https://centerstage.org/education/camp_bcs)

REACH OUT FOR MORE INFO: [EDUCATION@CENTERSTAGE.ORG](mailto:education@centerstage.org)

THANK YOU

The following list includes gifts of \$250 or more made to the Baltimore Center Stage Annual Fund May 2024, through May 2025. Although space limitations make it impossible for us to list everyone, we are grateful for your continued support.

SEASON SPONSOR

American Theatre Wing
Andrew W. Mellon Foundation
Ellen & Ed Bernard
Jane & Larry Droppa
Sandy Liotta & Carl Osterman
The Shubert Foundation, Inc.

PRODUCERS CIRCLE

The William G. Baker, Jr. Memorial Fund
Baltimore Equitable Insurance
James & Janet Clauson
Julia McMillan & Jed Dietz
Brian M. & Denise H. Eakes
Ken & Elizabeth Lundeen
Juliet A. Eurich & Louis B. Thalheimer

ARTISTS CIRCLE

The Bunting Family Foundation
Mary Catherine Bunting
Joanne Frantz Doggett & Walter B. Doggett III

Pearlstone Family Fund
Rob & Beth Furlong
Sandra Levi Gerstung
Megan M. Gillick
The Goldsmith Family Foundation
Rebecca Henry & Harry Gruner
The Laverna Hahn Charitable Trust

The Hecht-Levi Foundation, Inc.
Francie & John Keenan
Townsend Kent
Keith Lee
The Joseph & Harvey Meyerhoff Family Charitable Funds
Sharon & Jay Smith
Morris A. Mechanic Foundation
Thomas Wilson Sanitarium for Children of Baltimore City

PLAYWRIGHTS CIRCLE

Anonymous (3)
Baltimore Community Foundation
Kim & Bobby Burks Jr.
The Annie E. Casey Foundation
Sally Digges & James Arnold

Fiordellisi Williams Family
Kate Berman & Adam Frank
Christopher & Wendy Jeffries
Patricia & Mark Joseph, The Shelter Foundation
The John J. Leidy Foundation, Inc.
Ken-Matt Martin
John & Kim McCardell
Nora Roberts Foundation
Jill Pratt & Kevin Cuppett
Lynn & Philip Rauch
Luna & Charlie Ravenna
Deborah & Craig Thompson
Stevie Walker-Webb
Ellen J. Remsen Webb & J.W. Thompson Webb
Julie & Jeffrey Wolf

DIRECTORS CIRCLE

Michael Chuapoco
Fishman Family Fund
Suzan Garabedian
Robert & Cheryl Guth
Ralph & Claire Hruban
David & Elizabeth J. Himelfarb Hurwitz
Susan & Steve Immelt

JJJ Charitable Foundation
Barry Kropf
Francine & Allan Krumholz
The Macht Philanthropic Fund of The Associated
Margaret O. Cromwell Family Fund
Dr. Carole Miller
Valerie & Hutch Robbins
Michelle & Nathan Robertson
Renee Samuels & Jordan Rosenfeld
Charles & Leslie Schwabe
Del. Stephanie M. Smith
Scott & Mimi Somerville
Scot T. Spencer
George & Holly Stone
Matthew Weiner
Todd M. Wilson & Edward Delaplaine II

Steve Yahr & Sarah Pick
Patricia Yevics-Eisenberg & Stewart Eisenberg

DESIGNERS CIRCLE

The Meier & Berlinghof Families Fund

Stanley Bogan

Mr. & Mrs.
Paul Brickman

Eddie C. &
C. Sylvia Brown

The Campbell
Foundation, Inc.

Linda Eberhart

Ms. Jennifer
Goldszmidt

Mrs. Lara &
Mr. Thomas Kopf

Mr. & Mrs. Earl
Linehan, The
Linehan Family
Foundation

Jada &
Chris McCray

Lee & Marilyn
Ogburn

Barbara Shapiro

COMPANY

Anonymous (2)

Diane Abeloff &
Emile Bendit

Dr. Nia Banks

John &
Carolyn Boitnott

Sharonne &
Jason Bonardi

Jan Boyce

Drs. Joanna &
Harry Brandt

Durryle Brooks

Rob Daniels &
Brad Kurland

The Honorable & Mrs.
E. Stephen Derby

Ms. Harriet Dopkin

Lynne Durbin &
J-F Mergen

Sue & Buddy
Emerson

Charles Gamper

Mr. Charles Gardner

Stuart & Linda
Grossman

Diane Harrison

Donald & Sybil Hebb

Benno & Elayne
Hurwitz Family
Foundation

Neil & Linda
Kirschner

Aida & James
Matters

Beverly &
John Michel

Sam & Brent Moore

Dr. & Mrs.
C.L. Moravec

Mr. Jason Najjoun

Michael & Phyllis
Panopoulos

Joanne &
Mark Pollak

Jesse Salazar &
Tom Williams

Sally S. & Decatur H.
Miller Private
Foundation

Bayinnah
Shabazz, M.D.

The Earle & Annette
Shawe Family
Foundation

Mr. & Mrs. Robert N.
Smelkinson

Sharon &
John Stanton

Jessica Strauss &
Andre Davis

Michael J. Thomson

Chrissy Thornton &
Jermaine Dixon

Mary Wise

The Zerhouni Family

Charitable
Foundation

ADVOCATES

Anonymous (2)

Ketaki Abhyankar

David & Nancy Blois

Hon. Evelyn Cannon
& James Casey

Tracey L. Chunn

Betty &
Stephen Cooper

Barry &
Christel Curtis

Gwen Davidson

Vanessa Douyon

Dr. Frank C.
Marino Foundation

Donald M. &
Margaret W. Engvall

Oskar Eustis

Arlene Falke

Merle &
David Fishman

Donald M. & Dorothy
W. Gundlach

Anna &
Caleb Horevay

Mark Horner &
Duke Stone

The A. C. & Penney
Hubbard Foundation

Rob Jentsch

Jade Jones

Max Jordan

Joseph M. &
Judy K. Langmead

Peter Leffman

Gregory Lehne

Timothy Meredith

George & Beth
Murnaghan

Mary Rogers
Obrecht & D.W.
Wells Obrecht

Megan Olsen

Ed & Jo Orser

Brigid Peterson

William &
Paula Phillips

Leslie &
Gary Plotnick

Sandy Roberts

Vicky & Brett Rogers

Merry Alterman
& Ed Rosenfeld

Jessica &
Glen Schatz

Mr. Benjamin Strong

Arun & Shilpa Subhas

The Ethel M. Looram
Foundation, Inc.

Terry & Stephanía
Thompson

Thrivent

John Wessner

PATRONS

Anonymous

Ms. Eileen Abel

Barb & David
Bettenhausen

Carol Lynne Burek &
Julian Smith

Suzanne &
David Cane

Mary K. Carter

Sue Lin Chong

Carol & Will Cooke

Debra Brown Felser
& Gary Felser

Eric Frank

The Jim & Anne
Cantler Memorial
Fund

Sol Garay	Jim & Linda Loesch	Edward Robbins	Maria J. Wawer
Mark & Patti Gillen	Brian London	John & Sarah Robinson	Ms. Rebecca Weiss
Joanne Hayes-Rines	Ellen Lupton	Kenyatta Rogers	Michael Whitecar
Patrick Joust	James Lytle	Ayesha Shabazz	Kirsten Woelper
Aaron Burstein	Louis Malick	Dr. Carl Shanholtz & Dr. Ruth Horowitz	Brad & Crickett Woloson
Alane & George Kimes	Jeanne E. Marsh	Stephen & Gail Shawe	Deborah King-Young & Daniel Young
Maggie Klinedinst	David & Ellen McGinnis	Jim Smith	Zoey Zuo
Robert & Barbara Lagas	Kevin Murphy	Ryan Smith	
Vanessa Douyon & Stefan Lallinger	John Paquette	Ms. Dionne Spencer	
Ms. Laurie Lessans	Ben & Emarie Payne	Sharon & John Stanton	
Jill Levin	Jane Petkofsky	Dr. Emma J. Stokes	
Mr. Bjoern Leyser	Emily Reeder	Drs. Harold & Robin Tucker	
Freddi Lipstein & Scott Berg	Alison & Arnold Richman		
	Jeff & Colleen Rives		

SUPPORT BCS BY MAKING A TAX-DEDUCTIBLE DONATION TODAY!



We envision Baltimore Center Stage as a producer of the most compelling productions and stories of our time, as an institution in service to our city and state by providing transformative arts experiences for youth, and as a hub of creative exchange for our city's visionary artists, leaders, and community members. **Thank you for making this vision possible.**

Visit centerstage.org/donate or scan the QR code.

CORPORATIONS

SEASON SPONSOR



An Exelon Company

PRODUCERS CIRCLE



EXECUTIVES CIRCLE



ARTISTS CIRCLE

Saul Ewing Arnstein
& Lehr LLP

Whiting-Turner
Contracting Co.

GOVERNMENT GRANTS

SEASON SPONSOR

Baltimore City Government,
Mayor's Office

Baltimore County Commission
on the Arts and Sciences

Howard County Arts Council
through a grant from
Howard County

Maryland State Arts Council

Maryland State Department
Of Service And Civic
Innovation

EDUCATION SPONSOR

Maryland State
Department of Education

MATCHING GIFT COMPANIES

Baltimore Civic Fund

BGE

Brown Capital
Management, Inc.

The Annie E. Casey Foundation

JMI Equity

McCormick & Co. Inc.

New Enterprise Associates

PayPal Giving Fund

PNC Greater Maryland

T. Rowe Price Group, Inc.



BALTIMORE CENTER STAGE THE NEXT ACT

A CAMPAIGN TO **IGNITE THE FUTURE** OF BALTIMORE
CENTER STAGE WITH **JOY, SERVICE, AND CONNECTION**

WE WOULD LIKE TO THANK SANDY LIOTTA FOR HER LEADERSHIP,
SUPPORT, AND ACKNOWLEDGE THESE DONORS

The following list includes gifts of \$50 or more made to Baltimore Center Stage's
The Next Act Campaign.

Alexander Aaron

Terri & Tedd Alexander

Deborah & Michael Amster

Anonymous (19)

Violet Apple

Jacob Ashworth

Peter & Millicent Bain

Dr. Nia Banks

Kathleen Ann Barber

Kevin Bartz

Katie Basti

Nichole Battle

Robin Camhi Baum &

Richard Baum

Jeff Bazemore

Lori Bellan

Ellis Berman

Kate Berman & Adam Frank

Ellen & Ed Bernard

Richard Bett

Melissa Bird

Jacalyn Blackwell-White

Barabara Blount Armstrong

Stanley Bogan

Courtney & Daniel Bolinson

Sharonne & Jason Bonardi

Joel Booster

Mitchell Boyarsky

Sharon E. Boyd

Kendall Bozzello

Suzanne K. Brace

Aquila Branch-James

Durryle Brooks

Joanne & Wayne Brooks

David Brown

Nick Brown

Adam Burk

Kim & Bobby Burks, Jr.

Bobbie & Kim Burks

Robyn Calhoun

Suzanne & David Cane

Karem Carson-Nelson

The Annie E. Casey
Foundation

Beth & Thomas Casey

Kim & Alan C. Cason

James & Janet Clauson

Monifa Coaxum

Joel & Norma Cohen

Brad Montalbano

Connaughton

Linda Couch



Your donation supports our programs on stage and in the community,
including working with young people incarcerated in the juvenile
justice system, the nation's oldest youth playwriting festival, and more!

Scan now or text **NEXTACT** to **44-321** to donate today!
bit.ly/nextactbcs

Danielle Crawford
Thomas Culotta
Kevin Cuppett
Janet Curie
Barry & Christel Curtis
Patricia D'Adamo & Rob
Foard
Courtney Dagistan
Jessica & David Dahl
Rob Daniels & Brad Kurland
Yvonne David
Courtney Davis
Robert & Janice Davis
Byron Deese
Linda Demmler
Dana DiCarlo
Julia McMillan & Jed Dietz
Brian Dobbins
Joanne Frantz Doggett &
Walter B. Doggett, III
Harriet Dopkin
Deborah Dorsey
Rayschel Dorsey
Jane & Larry Droppa
Maureen Dry-Wasson
Robin J Dunitz
Lynne Durbin & J-F Mergen
Brian M. & Denise H. Eakes
Paige Eakes
Mimi Edmunds
The Pearlstone Family Fund
Kim England
Kirsten Eriksson
Timothy Evans
Michelle Falconer
The Roberts Family
Debra Brown Felser &
Gary Felser
Savonne Ferguson
Mica Fidler
Emanuel Figueroa &
Katie Beltz
Michele A. Fiorentino

Annette Fisher
John W. Ford
Marjorie Forster
Alexander Frank
Avraham Frank
Sandie Frazier
Linda Fredeking
Brenda Freeman
Terri Freeman
JC Fresnel
Joel Gamble
Laura Gardner
Mrs. Tere Geckle
Lee Gibbs
Megan M. Gillick
Tedra Gilmore
Megan Gomes
Ann Clary Gordon
J. Wyndal Gordon
Sarah Grebow
Adrieene Green
John & Carol Green
Beth Gregory
Robert & Cheryl Guth
Hilary Haber
Chevonne Hall
Doug &
Lincolnette Handy
Douglas Handy
Linda Harding
Adrian Harpool
Tameke Harris
Jacqueline Heinrich
Meryl Helring
Micah Hendler
Nancy Hensler
Dana Henson
Bobette Hitchcock
Carla Hopkins
Jonathan Hopper
Anna & Caleb Horevay
Brian Howard

Charles Huddleston
David & Elizabeth J.
Himelfarb Hurwitz
Erik Hyman
Brandon Irabor
Deborah Jackson
Jeffrey Jackson
Leigh D. Jackson
Stephon Jackson & Debra
Clawson-Jackson
Joan Jacobson
Dr. Elizabeth Jaffee
Christopher &
Wendy Jeffries
Rob Jentsch
William & Brenda Jews
Audrey Johnson
Jacqueline Johnson
George F. Jones &
Monica Brandes
Magda Jones
Rachel Karpf &
Brent Reidy
Anne Keyser
Betty Kirby
Jan Kleinman
John Knapp
Kristin Kober
Kenneth B. Kolodner &
Alison Brown
Lara & Thomas Kopf
Ladies Who Lunch
"Happy Hour"
Moneese de Lara
Brenda Leadley
Alexandra Ledbetter
Laurie Lessans
David & Deborah Levitt
Margaret M. Liggett
Ferdinand Liotta
Sandy Liotta &
Carl Osterman
Zulema Liotta
Brandon Lockett

Jason E. Logan	Carolyn Rea-English	Susan Tafler
Janda Lukin	Justin Redd	Anita Thomas
Marc MacAranas	Fatima Reed	Deborah & Craig Thompson
Christopher & Alison Magoon	Valerie & Hutch Robbins	Donald Thoms
Gregory Malcolm	Angela Rodiek	Becky Thomson
Thibault & Lola Manekin	Barbara & Seth Rosenzweig	Chrissy Thornton & Jermaine Dixon
Johnathan Mark	Fiona Rudin	Cynthia Todd
Eric Marlin & Luke White	Gregory Sadowski	Martin Treu
Zoraida Marrero	Renee Samuels & Jordan Rosenfeld	Monica Truesdale
Kelly Mason	Phil Santora	Derek Van de Walle
Sally McCann	Vondalin Saunders	Lori Villegas
Erik McIntosh	Yelena Sayko	Dr. Tamekia Wakefield
Marco K. Merrick	Gregory & Claudia Schenkel	Robert C. Walker
Lenore Meyers & Mark Sugarman	Jane & Jeff Seibert	Anne Wallestad
Jeremy Milbrodt	Lauren Seitz	Charles Washington
Patrick Miles	Sue Sepelak	R&Y Washington
Dr. Carole Miller	Bayinnah Shabazz, M.D.	Nicole Watford
Johanna & Nichole Miller	Lara Shields	Nicholas R. Weir
Leah Mintz	Rachel Shuey	Ms. Eleanor Wen
Paul Mintz	Jon Simpson	Patricia West
Hughes Mintzer	Angela Sims	Marceline White
Governor Wes Moore & First Lady Dawn Moore	Bernard K. Sims	Nicole Whitecar
Lisa & Tony Morris	Steven & Benjamin Skerritt-Davis	Carole G. Wilder
Brandi Muller	Abigail E. Smith	Cheryl Hudgins Williams & Alonza Williams
Kevin Murphy	Calvin Smith	Cathy Williams
Jason & Robyn Murphy	Linda Smith	Kenneth Williams
Jason Najjoun	Mitchell Smith	Lisa Williams
Elizabeth Oates	Sharon & Jay Smith	Paula & Anre Williams
Lindsey Oshita	Del. Stephanie M. Smith	Taylor Williams
Alease Owens	Terry Smith	Walter Williams
John Paquette	Jess Solomon	Julie & Jeffrey Wolf
Denise Parker	Hunter Somerville	Michelle Wright
Kevin Peck	Scott & Mimi Somerville	Patricia Yevics-Eisenberg & Stewart Eisenberg
John & Greta Peoples	Brett Somervillle	Beth Yohe
Natalie Phillips	Lillian Sparks	Amanda C. Zinn
Lyne Pitts	Scot T. Spencer	
Conrad Pratt	David Steinhorn	
Jill Pratt & Kevin Cuppett	Jeff Stern	
Cori Ramos	Kenneth Stewart	
Luna & Charlie Ravenna	Patrick Stoffregen	

The listing of contributions was compiled as accurately as possible from Baltimore Center Stage records. Errors, however, can occasionally occur. For more information on becoming a donor to The Next Act please call 410.986.4027.

Founded in 1963 and designated the State Theater of Maryland in 1978, Baltimore Center Stage provides the highest quality theater and programming for all members of our communities, including youth and families, under the leadership of Artistic Director Stevie Walker-Webb and Managing Director Adam Frank. Baltimore Center Stage ignites conversations and imaginations by producing an eclectic season of professional productions across two mainstages and an intimate 99-seat theater, through engaging community programs, and with inspiring education programs. Everything we do at Center Stage is led by our core values—chief among them being Access For All. Our mission is heavily rooted in providing active and open accessibility for everyone, regardless of any and all barriers, to our Mainstage performances, education initiatives, and community programming.

BOARD

Sandy Liotta
PRESIDENT

Jill Pratt
VICE PRESIDENT

Scot T. Spencer
VICE PRESIDENT

Sharonne Bonardi
VICE PRESIDENT

Brian M. Eakes
TREASURER

Jordan D. Rosenfeld
SECRETARY

Dr. Nia Banks

Casey Boccia

Duryle Brooks

Bobby Burks Jr.

Darek S. Bushnaq

Christel Curtis

Jed Dietz

Walter B. Doggett III

Jane W.I. Droppa

Lynne Durbin

Amy Elias

Annette Fisher

Rob Furlong

Cheryl O'Donnell Guth

Carla Henry Hopkins

Elizabeth J. Himelfarb
Hurwitz

Anna Horevay

Chris Jeffries

The Reverend Kobi Little

John McCardell

Carole Miller

Dawn Moore

Luna Ravenna

E. Hutchinson Robbins, Jr.

Jesse Salazar

Letieri R. Schnor

Dr. Bayinnah Shabazz

Del. Stephanie M. Smith

Scott Somerville

Deborah St. Lawrence
Thompson

Chrissy Thornton

Charles Washington

Nicole Whitecar

Julie Wolf

TRUSTEES EMERITI

Edward C. Bernard

Katharine C. Blakeslee

James T. Brady +

C. Sylvia Brown

August J. Chiasera

Lynn Deering

Juliet A. Eurich

Suzan Garabedian

Martha Head

John Keenan

E. Robert Kent, Jr. +

Joseph M. Langmead

Kenneth C. Lundeen

Marilyn Meyerhoff +

J. William Murray

Charles E. Noell III

Esther Pearlstone

Philip J. Rauch

Monica Sagner

Robert W. (Jay) Smith

George M. Sherman +

J.W. Thompson Webb

+ In Memoriam

STAFF

LEADERSHIP

ARTISTIC DIRECTOR
Stevie Walker-Webb

MANAGING DIRECTOR
Adam Frank

EXECUTIVE OFFICE

EXECUTIVE OFFICE MANAGER
Angela Rodiek

EXECUTIVE OFFICE
ASSOCIATE
Shaquan Pearson

ARTISTIC PRODUCING

PRODUCING DIRECTOR
Ken-Matt Martin

PRODUCER
Charlique C. Rolle

ASSOCIATE
LINE PRODUCER
Bridgette C. Burton

COMPANY MANAGER
Regina (RGG) Summers

ARTISTIC

ARTISTIC ASSOCIATE,
NEW WORKS
Avon Haughton

ARTISTIC ASSOCIATE,
EDUCATION
Erin Margaret Pettigrew

ARTISTIC ASSOCIATE,
EDUCATION
Hope Hynson

ARTISTIC ASSOCIATE,
CIVIC & COMMUNITY
estrellita beatriz

ARTIST IN RESIDENCE
Bo Frazier

TEACHING ARTISTS

LEAD TEACHING ARTISTS
Susan Stroupe
Zipporah Brown Gladden

TEACHING ARTISTS
Carolyn Buck
Allison Brown
Tarshai Peterson
Susan Moon

JUVENILE JUSTICE
TEACHING ARTIST
Nicolas D. Picou

BCS SUMMER CAMP
COUNSELORS
Mia Boydston
Melissa Freilich
Madison Gallagher
Erica Lay
Corynne Moss-Brewer
JC Payne
Shaquan Pearson
Landra Akosua Simpson
Eduard Van Osterom

DEVELOPMENT

DIRECTOR OF
DEVELOPMENT
Emanuel Figueroa

ASSOCIATE DIRECTOR OF
DEVELOPMENT
Brittany Adams

TESSITURA DATABASE
MANAGER
Kelly Broderick

SPECIAL EVENTS MANAGER
Chania Hudson

FINANCE & OPERATIONS

ASSOCIATE
MANAGING DIRECTOR
Jenn Dewberry

HR MANAGER
Meg Williams

INFORMATION TECHNOLOGIES

DIRECTOR OF INFORMATION
TECHNOLOGIES
John Paquette

MARKETING & COMMUNICATIONS

DIRECTOR OF MARKETING &
COMMUNICATIONS
Tyrone Manning

ASSOCIATE DIRECTOR OF
MARKETING &
COMMUNICATIONS
Bo Frazier

GRAPHIC DESIGNER
Theresa Lammon

TIKTOK AMBASSADOR
Mecca Morphosis

C
E
N
T
E
R
S
T
A
G
E

PR CONSULTANTS

Robyn Murphy
LaDawn Black

AUDIENCE SERVICES

ASSOCIATE DIRECTOR
OF AUDIENCE
EXPERIENCE
Dana Hurd

AUDIENCE SERVICES
ASSISTANT
Josh Bouldin

EVENTS MANAGER
Sarah Young

DOCENT
COORDINATOR
Pat Yevics

HOUSE MANAGERS
Kelleigh Pangratz
Aaron Shaw
Gray Hemphill
Nat Dent
Aaron Fletcher
Anna Herb

CONCESSIONS
Asia Maxton
Candice Christmas
Heidi Holleger
Jane Schwartz
Mike Changwe
Valerie Long

BOX OFFICE

MEMBERSHIPS
MANAGER
Jerrilyn Keene

ASSISTANT BOX
OFFICE MANAGER
Bird Pope

PATRON SERVICES
ASSOCIATES
Tracey Brown
Stephanie Mendoza
Natalie Dent
Aaron Fletcher
David Kanter
Hannah Winston

FACILITIES

DIRECTOR OF FACILITIES
Patrick Frate

FACILITIES ASSOCIATE
Mads Primini

PRODUCTION

DIRECTOR OF
PRODUCTION
Jeffery C. Bazemore

ASSOCIATE
PRODUCTION
MANAGER
Alexis E. Davis

AUDIO

AUDIO/MULTIMEDIA
DIRECTOR
Eric Denson

AUDIO ENGINEER
Simon Briggs

THE LAB SCHOOL
HIGH SCHOOL INTERN
Tobias Dotson

COSTUMES

COSTUME DIRECTOR
Frederick Deeben

CRAFTSPERSON
William E. Crowther

CUTTER/DRAPER
Erin Stanek

THE LAB SCHOOL
HIGH SCHOOL
COSTUMES INTERN
Ryan Robinson

ELECTRICS

LIGHTING DIRECTOR
Samantha Brewer

ASSISTANT LIGHTING
DIRECTOR
Jessica Anderson

LEAD ELECTRICIAN
Michael Logue

STAFF ELECTRICIAN
Tyrell Stanley

SERVICE YEAR
LIGHTING APPRENTICE
Kim Parson

PROPERTIES

PROPERTIES DIRECTOR
Rachael Erichsen

ASSISTANT PROPERTIES
MANAGER /ARTISAN
Jessie Combett

LEAD CRAFTSPERSON
Nate Scheifele

SCENERY

TD CONSULTANT/
PROJECT MANAGER
John McAfee

LEAD CARPENTER
Brian Jamal Marshall

SCENIC CARPENTER
Elijah Miller

CARPENTRY OVERHIRES
Izzy Zommer
Thiery Banks

SERVICE YEAR SCENIC
& PROPS APPRENTICE
Isabella Foster

THE PARK SCHOOL OF
BALTIMORE CARPENTRY
HIGH SCHOOL INTERN
Ryken Berkowitz

SCENIC ART

CHARGE SCENIC
ARTIST
Erich Starke

STAGE OPERATIONS

WARDROBE HEAD
Linda Cavell

THE PECULIAR PATRIOT

OCT 15 - NOV 9, 2025

WRITTEN BY LIZA JESSIE PETERSON
DIRECTED BY TALVIN WILKS



SANTA CLAUS IS COMIN':

A MOTOWN CHRISTMAS REVUE

WORLD PREMIERE
NOV 26, 2025 - JAN 4, 2026

CREATED BY NYGEL D. ROBINSON
CO-DIRECTED & CO-CHOREOGRAPHED BY
KEN-MATT MARTIN & VICTOR MUSONI



TRINITY

PRESENTED IN ASSOCIATION WITH HILLMAN GRAD

WORLD PREMIERE
FEB 12 - MAR 8, 2026

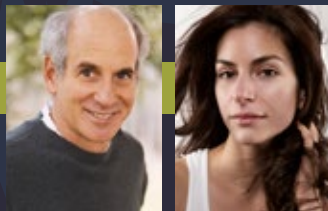
WRITTEN BY LENA WAITHE
DIRECTED BY STEVIE WALKER-WEBB



HOLES

APR 16 - MAY 10, 2026

ADAPTED FROM THE BELOVED NOVEL BY
LOUIS SACHAR
DIRECTED BY JOHANNA GRUENHUT



(pray)

JUN 13 - JUL 5, 2026

WRITTEN, DIRECTED, & CHOREOGRAPHED BY
nicHi DOUGLAS
MUSIC BY STARR BUSBY
& JJJJEROME ELLIS



SUBSCRIPTIONS ARE ON SALE NOW!
CENTERSTAGE.ORG OR **VISIT THE BOX OFFICE**